



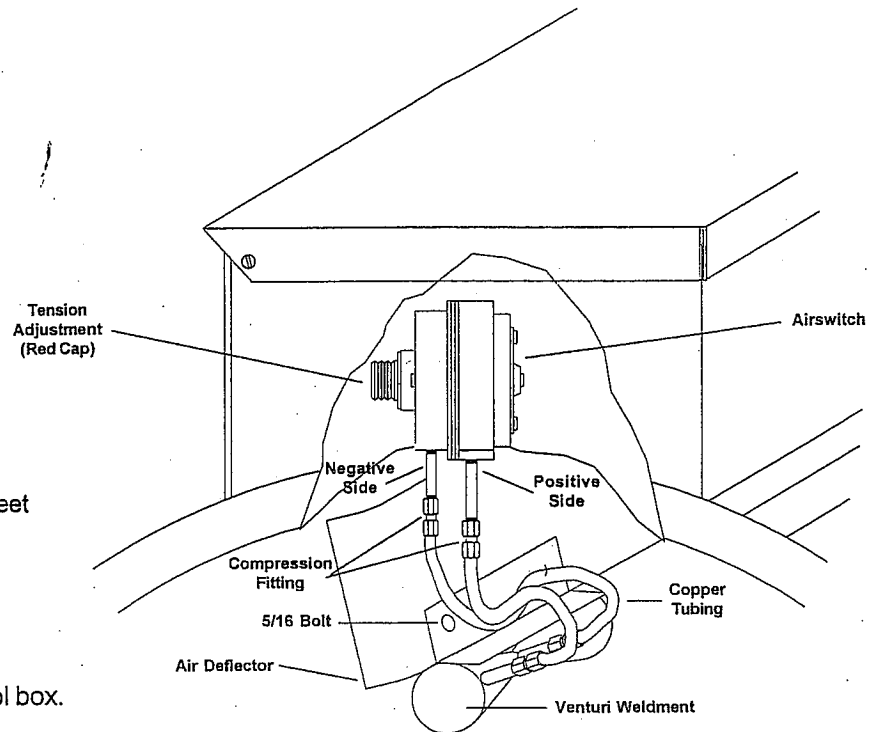
Part No.	195442
Bulletin	1160
Effective Date	12/10/97

INSTRUCTIONS FOR INSTALLATION OF VENTURI STYLE AIRSWITCH

When a heater is mounted on the inlet side of a centrifugal fan, the venturi cone weldment needs to be installed to allow proper function of the airswitch. The venturi weldment is to be installed on an air deflector (as shown below), as low as possible to allow the cone to be subjected to the maximum amount of airflow.

PACKING LIST

<u>QTY.</u>	<u>PART NO.</u>	<u>DESCRIPTION</u>
1	415661	Venturi Weldment
2	707935	Bolt 5/16 x 3/4
2	708206	Whiz Nut 5/16
3	715243	1/4" Copper Tubing
1	751016	Nipple 1/8" NPT x 2"
4	777185	Compression Fitting
1	195442	Bulletin 1160 Instruction Sheet



The directions for installation are as follows:

1. Remove the airswitch from the control box.
2. Install the 2" nipple into the negative side of the switch.
3. Reinstall airswitch into the control box.
4. Remove the screen guard from the inlet side of the heater.
5. Field drill (2) holes to mount the venturi weldment to the air deflector.
6. Mount venturi weldment to deflector using 5/16 bolt and whiz nut. Make sure the large end of the venturi (end with tap) is located toward the screen guard end.
7. Use compression fittings and copper tubing to plumb the positive side of the airswitch to the inlet side of the venturi weldment.
8. Plumb the negative side to the center of the venturi weldment.
9. Reinstall screen guard. Remove red cap from airswitch and set airswitch to electrically close the contacts when the fan is operating and open the contacts when the fan is shut off. Reinstall the red cap on the airswitch.