



TRUSTED. TESTED. TRUE.



**THE ULTIMATE
FIELD GUIDE**
QUALITY GRAIN MANAGEMENT



Chief Agri originated in 1961 and has grown to offer a full line of grain and commodity storage, aeration, and material handling products throughout the world.

The success of our company is directly attributed to the strong relationships we have created with our customers. Listening to client needs has led to innovative products that help producers minimize storage costs, protect the quality of their product, and maximize the selling price of their commodities.

Taking care of our customers is our top priority and we take pride in engineering unparalleled personal attention to our customers by offering dependable service and products built to last.

“The success of Chief Industries is largely because of the dedicated people —past and present — who built their careers at Chief, and helped Chief build lasting relationships with customers and suppliers around the world. We take incredible pride with how we treat all of our stakeholders. The experience, dedication and passion of our people here at Chief, in meeting the needs of these stakeholders, is second to none. I couldn’t be more proud of our group, with their understanding of how important it is that we live by our mission statement each and every day.”

-DJ Eihusen, CEO, Chairman of the Board, President

GRAIN STORAGE

DIVERSE SOLUTIONS UNPARALLELED STRENGTH AND DURABILITY

Discover the precision and reliability of Chief bins (silos), meticulously engineered to deliver exceptional strength, cost-effective material usage, seamless installation, and optimal grain protection. When you choose a Chief bin (silo), you’re not just acquiring storage; you’re securing a tailored solution for your unique grain handling requirements, backed by service that ensures your complete satisfaction.

Chief’s bin (silo) design stands out for its unmatched strength and durability, precisely catering to your specific grain storage needs. Our dedicated Chief representative is ready to assist you in selecting the ideal bins (silos) for your requirements, ensuring they are expertly constructed and available when you need them. Experience the assurance of quality and performance with Chief bins (silos).

Precision Engineered for outstanding performance!



FARM BINS (SILOS)
Durable grain storage systems in sizes ideal for the farm.



COMMERCIAL BINS (SILOS)
Heavy-duty commercial roof designs customized for your operation.



LEMANCO MODULAR BIN SYSTEMS
For the storage and gravity retrieval of dry bulk materials.

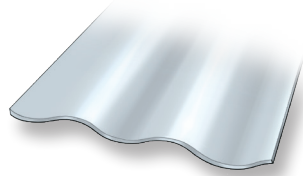


HOPPER TANKS
Get long-term reliability with high quality materials and unparalleled strength.

STEEL SIDEWALL SYSTEM

Chief produces high quality corrugated sidewalls to provide optimum grain protection.

- Our corrugated steel sidewalls are of high quality 20 through 8 gauge galvanized steel with a minimum tensile strength of 70 ksi (483 MPa) for increased load capacities.
- The 4.714" (11.97 cm) peak-to-peak corrugation of the sidewalls is $\frac{3}{4}$ " (1.905 cm) wider than those of the closest competition, reducing the chance for material to collect on the inner walls.
- Chief's 42.4" (107.7 cm) sidewalls increase load capacities and require less hardware than the 32" (81.28 cm) sidewall sections of alternative bins (silos). This reduces costly installation time.
- The sidewall steel has a standard G115 (350g/m²) galvanized coating that provides over 28% more corrosion resistance than the G90 (275g/m²) industry standard. Optional upgrade to G210 (610g/m²) galvanized steel available.

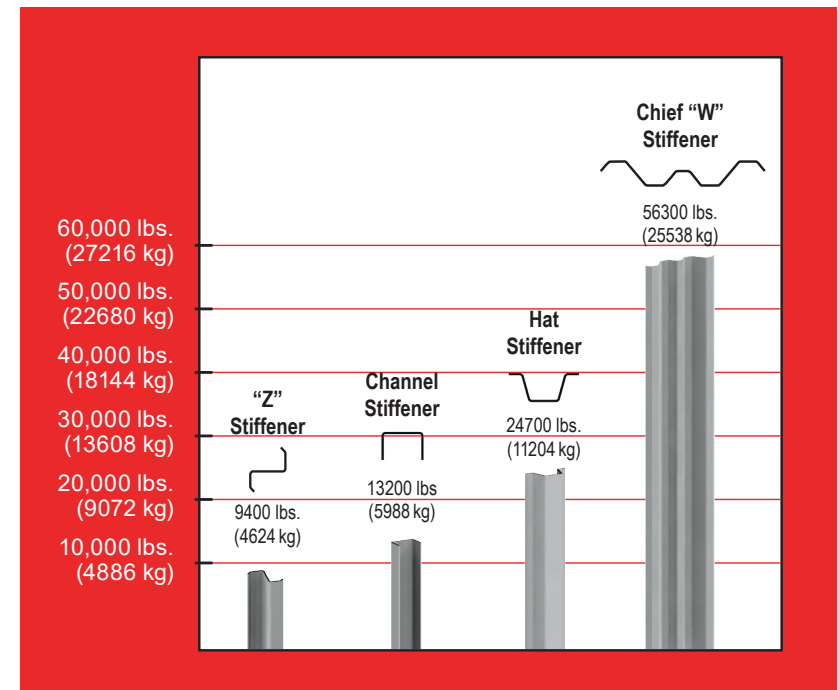


- The unique corrugation has a hill-and-valley bolting system using larger grade-8 bolts with conical sealing washers and serrated flange nuts. Chief uses the strongest bolts in the industry, giving Chief bins (silos) additional strength to better handle larger vertical load capacities and taller sidewall heights.



Reduced Assembly Time

Chief's unique 42.4" (107.7 cm) sidewall sections require fewer rings and seams than the 32" (81.28 cm) sidewall sections of competing bins (silos). When combined with our exclusive "W" stiffener, Chief bins (silos) offer unsurpassed strength while reducing costly assembly time.



PRECISION ENGINEERED FOR OUTSTANDING STRENGTH

Chief "W" stiffeners lead the competition in strength.

Chief Stiffened bins (silos) feature exclusive exterior "W" stiffeners that are designed to bear almost twice the weight of competitor stiffener designs. Designed to support the vertical load, the "W" stiffener system provides additional strength, allowing sidewall heights to exceed 100 feet (30.48 m). Combined with our high strength roof design they enable our bins to easily support overhead catwalks and conveyors.

End-to-end connections provide positive load transfer down the stiffener column, eliminating complex shear-load splicing. Unique "W" stiffeners on the bin's exterior help prevent grain from accumulating on the inside walls.

Anchor system provides solid base

Chief's positive anchor design ties the sidewall solidly to the foundation to allow for singlepass sweeps. This also provides strong resistance to lateral movement and uplift.



Chief's door systems make maintenance easier.

Chief offers one-ring double-portal frame doors or two-ring walk-thru doors. The door frames are hot-dip galvanized for superior corrosion resistance. Both have an easy latch system to provide unobstructed entry without requiring the removal of cross ties, tie rods, or tie bars.



One-Ring Doors

One-ring frame doors measure a generous 26" (.66m) wide by 38" (.96m) tall. (Standard for stiffened bins.)



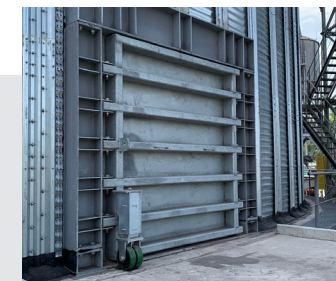
Two-Ring Doors

Chief's large 'easy-walk' door measures 26" (.66m) wide x 62" (1.57m) tall. With no brackets or hooks attached to the entry frame, a person can move through the door without fear of catching on obstructions.



Easy Latch System

The easy latch system on the inside and outside panels allow entry without the need for any tools. The lockable outside cover secures contents and protects against unauthorized entry.



Drive-In Door

This optional door measures 7'1" (2.159 m) wide by 8'8" (2.64 m) tall and is hot-dip galvanized for superior corrosion resistance.

Chief's unique side draw design increases strength and unload speeds

Elevate your grain handling capabilities with Chief's innovative side draw system, compatible with all Chief bins. Our 10,000 BPH standard side draw is a standout in the industry, setting new benchmarks for efficiency and performance.

Key Features:

Versatility: Install side draws in all Chief bins for flexible load-out configurations.

Industry-Leading Capacity: Our 14" Spout standard side draw sets the benchmark at 10,000 bushels/hour (250 MTPH).

Structural Reinforcement: Prevent stress and wear with reinforced bin walls for extended equipment life.

Precise Grain Handling: Direct grain flow, eliminate bridging, and optimize loading with in-take openings.

Tailored Sizes: Choose from two sizes to meet your specific needs.

- 14" Spout – 10,000 BPH (250MTPH)
- 18" Spout – 20,000 BPH (500 MTPH)

Elevate your efficiency with Chief – where reliability, performance, and innovation converge!





SAFETY AND TIME-SAVING FEATURES

Stairs, ladders, platforms and safety cages

Chief offers OSHA compliant options for bin stairs, inside/outside ladders, platforms, and safety cages all in galvanized finish.



Roof stairs

Stairs with guardrails make accessing the bin's midsection and peak safer and more convenient.



Roof inspection door is accessible from eave platform

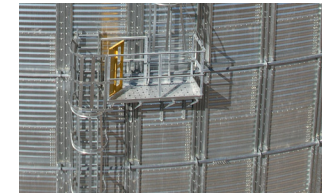
Chief offers single-tier and two-tier eave platforms. Either one will allow a person to safely remain standing while inspecting the grain through the roof inspection door.

Mid-roof and eave walkaround platforms

These platforms feature a guardrail and offer ample width for easy maneuverability, making it easier and safer to maintain the bin's (silos) openings and vents.



Safety cage options available



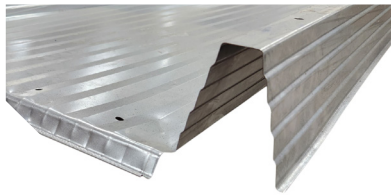
Ladder and cage rest platform



Foundation & side-wall decks available



V-RIB ROOF



The new V-Rib Roof from Chief Agri is the perfect solution for all your bin roofing needs. Engineered for both structured and unstructured roofs, the V-Rib panel incorporates a stair-step in the side slopes of the rib and subtle corrugations in the pan for increased strength and resistance to bending, shear, and axial loads. The grade of steel used in manufacturing the roof panels has also been increased from 33ksi to 40ksi, providing even more protection against the elements. With its larger capacity for snow, wind, and peak loads, the new V-Rib Roof is designed to protect your commodities well into the future.



Unmatched Height:

- The V-Rib Roof soars above the competition with a 4-inch rib profile, surpassing the next tallest at 3.5 inches. Its five vertical rib stiffening segments ensure superior strength.

Galvanized Finishes for Superior Protection:

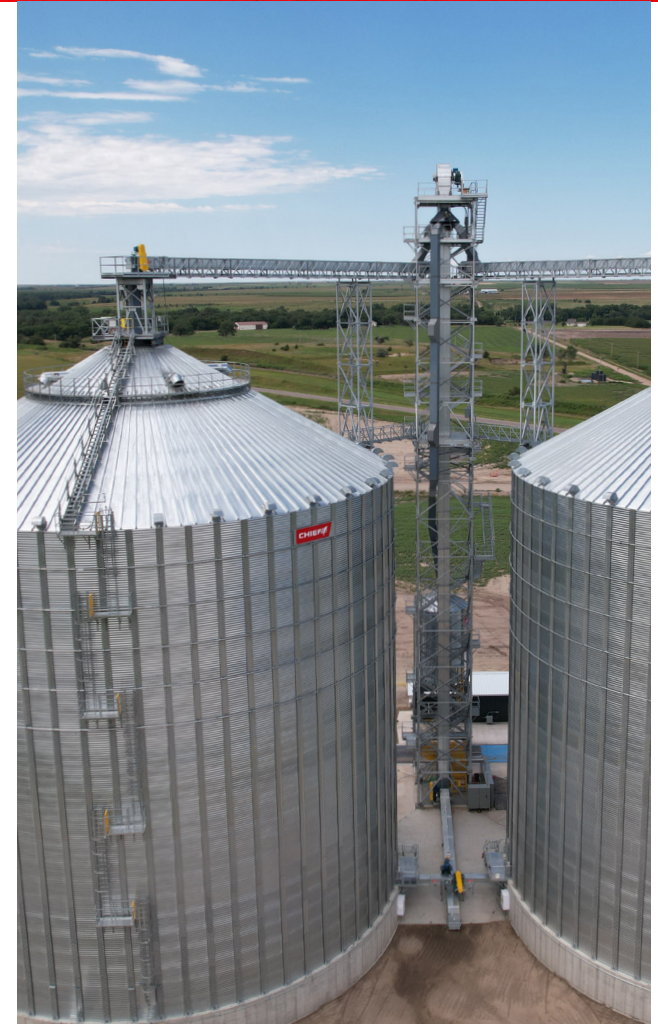
- Standard G115 galvanized finish provides robust corrosion resistance.
- Upgrade to G210 for premium durability, ideal for challenging environments.

22ga 40KSI Steel Construction:

- Crafted from resilient 22-gauge 40KSI steel, ensuring strength and flexibility.

Advantages:

- Durability: Exceptional materials and design translate to a longer lifespan.
- Weather Resistance: Resilient against corrosion, weathering, and environmental challenges.
- Ease of Installation: Effortless installation without compromising strength.



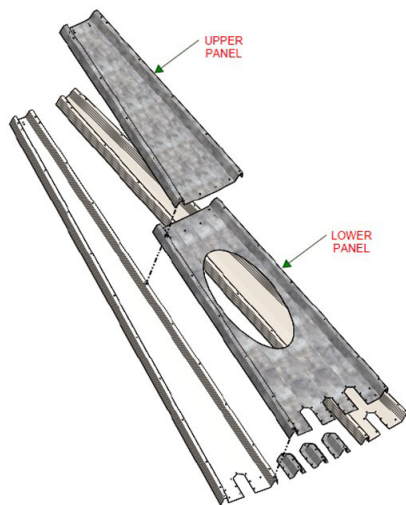
Chief Agri's V-Rib Roof combines innovative design with premium materials, providing a reliable, durable, and weather-resistant solution. Elevate your expectations with Chief Agri.

Roof Fan Panel Assembly

Key Features:

- Strategically placed roof fans optimize ventilation efficiency.
- One panel replaces two standard upper tier SVR roof panels, maximizing functionality.
- Easy installation with seamless integration for a simplified process.
- Secure fastening ensures stability using 5/16x1" bin bolts and nuts.
- Enhanced protection with additional peak rib caps.
- Weather resistant with strip sealant application.

Experience the innovation and efficiency of our Roof Fan Panel Assembly – a sophisticated solution for superior ventilation and structural integration.



WORLD CLASS DESIGN FEATURES

Vents and Roof Exhausts

Chief offers the industry's most complete exhaust line. All vents install easily and are designed to minimize build-up of ice and foreign materials. Pre-punched roof panels make installation quick and easy!



Goose Neck Vent

2670 CFM (4536 m³/h)
hooded bin vent is 20% larger than standard hooded vents.



Roof Exhausters

- 18" (458mm) 4000 CFM (6796 m³/H)
 - 24" (610mm) 10650 CFM (18094 m³/H)
- Roof exhaust fans available.



Wind, snow, and seismic upgrades available

All Chief bins are designed per ASCE standards and can be upgraded to withstand the environmental loads specific to your area as needed.

Grain monitoring system

Chief Agri is a distributor of highly sophisticated grain storage monitoring products, ranging from simple handheld monitoring units to complete computer-controlled grain management systems.





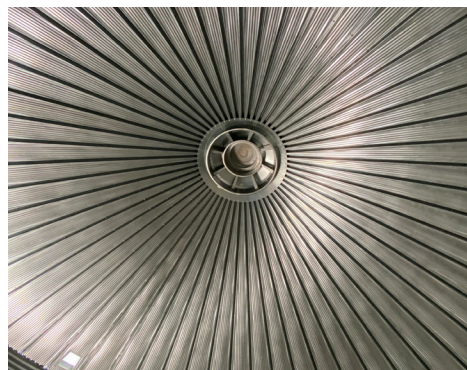
FARM BINS

STIFFENED AND UNSTIFFENED

Elevate your farm with Chief Farm Bins, designed for seamless integration into commercial grain management systems. Enjoy the renowned strength, durability, and easy installation that define Chief's reputation.

Available in sizes ranging from 15'6" (4.72m) to 49'6" (15.09m) in diameter and 19'2" (5.84m) to 82'3" (25.07m) in overall height, Chief offers stiffened or unstiffened bins to suit any farm operation.

Consult with your local Chief Agri dealer to effortlessly select bins that meet your specific needs. Our expertly constructed bins will be ready when you need them, ensuring a seamless integration into your farm management strategy.



CHIEF STIFFENED (CB) AND UNSTIFFENED (CBU) FARM BIN SPECS

Dia.	Bin Model #	HEIGHT				STORAGE CAPACITY			
		Eave (Ft.)	Eave (M)	Overall (Ft.)	Overall (M)	Level to Eave (Bushels)	Filled to Peak (Bushels)	Filled to Peak (M Ton)	Filled to Peak (Cub. M)
All Dia 15'6" (4.7m)	CB/CBU 5-4	14' 2"	4.3	18' 4"	5.6	2,077	2296	62	76
	CB/CBU 5-5	17' 8"	5.4	21' 10"	6.6	2,643	2862	78	95
	CB/CBU 5-6	21' 3"	6.5	25' 5"	7.8	3,209	3428	93	114
	CB/CBU 5-7	24' 9"	7.5	28' 11"	8.8	3,775	3994	109	133
	CB/CBU 5-8	28' 3"	8.6	32' 5"	9.9	4,341	4560	124	152
	CB/CBU 5-9	31' 10"	9.7	36'	11	4,907	5126	140	170
All Dia 18' 7" (5.5m)	CB/CBU 6-4	14' 2"	4.3	19' 3"	5.9	2,991	3370	92	112
	CB/CBU 6-5	17' 8"	5.4	22' 9"	6.9	3,806	4185	114	139
	CB/CBU 6-6	21' 3"	6.5	26' 4"	8	4,621	5000	136	166
	CB/CBU 6-7	24' 9"	7.5	29' 10"	9.1	5,436	5815	158	193
	CB/CBU 6-8	28' 3"	8.6	33' 4"	10.2	6,250	6630	180	220
	CB/CBU 6-9	31' 10"	9.7	36' 11"	11.2	7,065	7445	203	247
All Dia 21' 8" (6.6m)	CB/CBU 7-4	14' 2"	4.3	20' 2"	6.2	4,071	4673	127	155
	CB/CBU 7-5	17' 8"	5.4	23' 8"	7.2	5,180	5782	157	192
	CB/CBU 7-6	21' 3"	6.5	27' 3"	8.3	6,289	6891	188	229
	CB/CBU 7-7	24' 9"	7.5	30' 9"	9.4	7,398	8000	218	266
	CB/CBU 7-8	28' 3"	8.6	34' 3"	10.4	8,508	9110	248	303
	CB/CBU 7-9	31' 10"	9.7	37' 10"	11.5	9,617	10219	278	340
All Dia 24' (7.3m)	CBUE 8-4	14' 2"	4.3	21'	6.4	4,948	5754	157	191
	CBUE 8-5	17' 8"	5.4	24' 7"	7.5	6,296	7102	193	236
	CBUE 8-6	21' 3"	6.5	28' 1"	8.6	7,644	8450	230	281
	CBUE 8-7	24' 9"	7.5	31' 8"	9.6	8,992	9798	267	326
	CBUE 8-8	28' 3"	8.6	35' 2"	10.7	10,340	11146	303	371
	CBUE 8-9	31' 10"	9.7	38' 9"	11.8	11,688	12495	340	415
All Dia 24' 9" (7.5m)	CB/CBU 8-4	14' 2"	4.3	21' 1"	6.4	5,317	6216	169	207
	CB/CBU 8-5	17' 8"	5.4	24' 7"	7.5	6,766	7664	209	255
	CB/CBU 8-6	21' 3"	6.5	28' 2"	8.6	8,214	9113	248	303
	CB/CBU 8-7	24' 9"	7.5	31' 8"	9.6	9,663	10562	287	351
	CB/CBU 8-8	28' 3"	8.6	35' 2"	10.7	11,112	12011	327	399
	CB/CBU 8-9	31' 10"	9.7	38' 9"	11.8	12,561	13459	366	447
CB/CBU 8-10	35' 4"	10.8	42' 3"	12.9	14,009	14908	406	496	

Precision engineered for outstanding performance!



Dia.	Bin Model #	HEIGHT				STORAGE CAPACITY			
		Eave (Ft.)	Eave (M)	Overall (Ft.)	Overall (M)	Level to Eave (Bushels)	Filled to Peak (Bushels)	Filled to Peak (M Ton)	Filled to Peak (Cub. M)
All Dia 30' (9.1m)	CBUE 10-4	14' 2"	4.3	22' 10"	7	7,730	9306	253	309
	CBUE 10-5	17' 8"	5.4	26' 4"	8	9,837	11412	311	379
	CBUE 10-6	21' 3"	6.5	29' 11"	9.1	11,943	13519	368	449
	CBUE 10-7	24' 9"	7.5	33' 5"	10.2	14,050	15625	425	519
	CBUE 10-8	28' 3"	8.6	36' 11"	11.2	16,156	17731	483	589
	CBUE 10-9	31' 10"	9.7	40' 6"	12.3	18,262	19838	540	659
	CBUE 10-10	35' 4"	10.8	44'	13.4	20,369	21944	597	730
All Dia 30' 11" (9.4m)	CB/CBU 10-4	14' 2"	4.3	22' 10"	7	8,308	10063	274	335
	CB/CBU 10-5	17' 8"	5.4	26' 4"	8	10,571	12327	335	410
	CB/CBU 10-6	21' 3"	6.5	29' 11"	9.1	12,835	14590	397	485
	CB/CBU 10-7	24' 9"	7.5	33' 5"	10.2	15,099	16854	459	560
	CB/CBU 10-8	28' 3"	8.6	36' 11"	11.2	17,362	19118	520	636
	CB/CBU 10-9	31' 10"	9.7	40' 6"	12.3	19,626	21381	582	711
	CB/CBU 10-10	35' 4"	10.8	44'	13.4	21,890	23645	644	786

Dia.	Bin Model #	HEIGHT				STORAGE CAPACITY			
		Eave (Ft.)	Eave (M)	Overall (Ft.)	Overall (M)	Level to Eave (Bushels)	Filled to Peak (Bushels)	Filled to Peak (M Ton)	Filled to Peak (Cub. M)
All Dia 27' (8.2m)	CBUE 9-4	14' 2"	4.3	21' 11"	6.7	6,262	7410	202	246
	CBUE 9-5	17' 8"	5.4	25' 5"	7.8	7,968	9116	248	303
	CBUE 9-6	21' 3"	6.5	29'	8.8	9,674	10823	295	360
	CBUE 9-7	24' 9"	7.5	32' 6"	9.9	11,380	12529	341	417
	CBUE 9-8	28' 3"	8.6	36'	11	13,086	14235	387	473
CBUE 9-9	31' 10"	9.7	39' 7"	12.1	14,793	15941	434	530	
All Dia 27' 10" (8.5m)	CB/CBU 9-4	14' 2"	4.3	21' 11"	6.7	6,729	8009	218	266
	CB/CBU 9-5	17' 8"	5.4	25' 5"	7.8	8,563	9842	268	327
	CB/CBU 9-6	21' 3"	6.5	29'	8.8	10,396	11676	318	388
	CB/CBU 9-7	24' 9"	7.5	32' 6"	9.9	12,230	13510	368	449
	CB/CBU 9-8	28' 3"	8.6	36'	11	14,064	15343	418	510
	CB/CBU 9-9	31' 10"	9.7	39' 7"	12.1	15,897	17177	467	571
CB/CBU 9-10	35' 4"	10.8	43' 1"	13.1	17,731	19010	517	632	



Dia.	Bin Model #	HEIGHT				STORAGE CAPACITY			
		Eave (Ft.)	Eave (M)	Overall (Ft.)	Overall (M)	Level to Eave (Bushels)	Filled to Peak (Bushels)	Filled to Peak (M Ton)	Filled to Peak (Cub. M)
All Dia 36'0" (11.1m)	CB/CBU 11-4	14' 2"	4.3	23' 9"	7.2	9,354	11451	312	381
	CB/CBU 11-5	17' 8"	5.4	27' 3"	8.3	11,903	14000	381	465
	CB/CBU 11-6	21' 3"	6.5	30' 10"	9.4	14,451	16548	450	550
	CB/CBU 11-7	24' 9"	7.5	34' 4"	10.5	17,000	19097	520	635
	CB/CBU 11-8	28' 3"	8.6	37' 10"	11.5	19,549	21646	589	720
	CB/CBU 11-9	31' 10"	9.7	41' 5"	12.6	22,097	24194	658	804
	CB/CBU 11-10	35' 4"	10.8	44' 11"	13.7	24,646	26743	728	889
All Dia 36' (11.1m)	CBUE 12-4	14' 2"	4.3	24' 6"	7.5	11,132	13854	377	461
	CBUE 12-5	17' 8"	5.4	28'	8.5	14,165	16887	460	561
	CBUE 12-6	21' 3"	6.5	31' 7"	9.6	17,198	19921	542	662
	CBUE 12-7	24' 9"	7.5	35' 1"	10.7	20,231	22954	625	763
	CBUE 12-8	28' 3"	8.6	38' 7"	11.8	23,265	25987	707	864
	CBUE 12-9	31' 10"	9.7	42' 2"	12.8	26,298	29020	790	965
	CBUE 12-10	35' 4"	10.8	45' 8"	13.9	29,331	32053	872	1,066
All Dia 37'1" (11.3m)	CB/CBU 12-5	17' 8"	5.4	28' 5"	8.7	15,223	18256	497	607
	CB/CBU 12-6	21' 3"	6.5	32'	9.8	18,483	12516	586	715
	CB/CBU 12-7	24' 9"	7.5	35' 6"	10.8	21,742	24775	674	824
	CB/CBU 12-8	28' 3"	8.6	39'	11.9	25,002	28035	763	932
	CB/CBU 12-9	31' 10"	9.7	42' 7"	13	28,262	31295	852	1,040
	CB/CBU 12-10	35' 4"	10.8	46' 1"	14	31,521	34554	940	1,149
All Dia 42' (12.8m)	CBUE 14-4	14' 2"	4.3	26' 7"	8.1	15,152	19475	530	647
	CBUE 14-5	17' 8"	5.4	30' 2"	9.2	19,280	23603	642	785
	CBUE 14-6	21' 3"	6.5	33' 8"	10.3	23,409	27732	755	922
	CBUE 14-7	24' 9"	7.5	37' 2"	11.3	27,537	31860	867	1,059
	CBUE 14-8	28' 3"	8.6	40' 9"	12.4	31,666	35989	979	1,196
	CBUE 14-9	31' 10"	9.7	44' 3"	13.5	35,794	40117	1,092	1,334
	CBUE 14-10	35' 4"	10.8	47' 10"	14.6	39,923	44246	1,204	1,471
All Dia 43'4" (13.2m)	CB/CBU 14-5	17' 8"	5.4	30' 7"	9.3	20,720	25536	695	849
	CB/CBU 14-6	21' 3"	6.5	34' 2"	10.4	25,157	29973	816	996
	CB/CBU 14-7	24' 9"	7.5	37' 8"	11.5	29,594	34410	936	1,144
	CB/CBU 14-8	28' 3"	8.6	41' 2"	12.6	34,030	38847	1057	1,291
	CB/CBU 14-9	31' 10"	9.7	44' 9"	13.6	38,467	43283	1,178	1,439
	CB/CBU 14-10	35' 4"	10.8	48' 3"	14.7	42,904	47720	1,299	1,586

Dia.	Bin Model #	HEIGHT				STORAGE CAPACITY			
		Eave (Ft.)	Eave (M)	Overall (Ft.)	Overall (M)	Level to Eave (Bushels)	Filled to Peak (Bushels)	Filled to Peak (M Ton)	Filled to Peak (Cub. M)
All Dia 49'6" (15.1m)	CBUE 16-5	17' 8"	5.4	32' 4"	9.9	25,182	31635	861	1,052
	CBUE 16-6	21' 3"	6.5	35' 11"	11	30,575	37028	1,008	1,231
	CBUE 16-7	24' 9"	7.5	39' 5"	12	35,967	42420	1,154	1,410
	CBUE 16-8	28' 3"	8.6	42' 11"	13.1	41,359	47812	1,301	1,589
	CBUE 16-9	31' 10"	9.7	46' 6"	14.2	46,752	53205	1,448	1,769
	CBUE 16-10	35' 4"	10.8	50'	15.2	52,144	58597	1,595	1,948
	CB/CBU 16-5	17' 8"	5.4	32' 4"	9.9	27,063	34252	932	1,139
	CB/CBU 16-6	21' 3"	6.5	35' 11"	11	32,858	40047	1,090	1,331
	CB/CBU 16-7	24' 9"	7.5	39' 5"	12	38,653	45842	1,248	1,524
	CB/CBU 16-8	28' 3"	8.6	42' 11"	13.1	44,448	51637	1,405	1,717
CB/CBU 16-9	31' 10"	9.7	46' 6"	14.2	50,243	57432	1,563	1,909	
CB/CBU 16-10	35' 4"	10.8	50'	15.2	56,038	63227	1,721	2,102	



COMMERCIAL BINS

At Chief Agri, we understand efficient grain storage is the backbone of a successful agricultural operation. Our Commercial Grain Storage solutions are designed with precision and innovation to meet the evolving needs of modern agriculture. With a legacy of excellence spanning decades, Chief Agri is the trusted choice for farmers and agribusinesses seeking reliability, durability, and performance.

Key Features:

Customization for Every Need:

Recognizing the diverse requirements of commercial grain storage, Chief Agri offers a range of customizable options. Whether you need large-capacity silos or a modular system for flexibility, our solutions can be tailored to your unique specifications.

Durability Beyond Compare:

Built with robust materials and precision engineering, Chief Agri's storage solutions guarantee long-lasting durability. Our structures are designed to withstand the toughest environmental conditions, providing peace of mind for farmers facing the challenges of modern agriculture.

Our standard, G115 Galvanization, ensures superior corrosion resistance. Enhance protection and longevity with the option to upgrade to G210.



		HEIGHT				STORAGE CAPACITY			
Dia.	Bin Model #	Eave (Ft.)	Eave (M)	Overall (Ft.)	Overall (M)	Level to Eave (Bushels)	Filled to Peak (Bushels)	Filled to Peak (M Ton)	Filled to Peak (Cub. M)
All Dia 37'1" (11.3m)	CB 12-11	38' 11"	11.9	49' 3"	15	35,780	38813	1056	1,290
	CB 12-12	42' 5"	12.9	52' 9"	16.1	39,040	42072	1,145	1,399
	CB 12-13	46'	14	56' 4"	17.2	42,299	45332	1,234	1,507
	CB 12-14	49' 6"	15.1	59' 10"	18.2	45,559	48592	1,322	1,615
	CB 12-15	53'	16.2	63' 4"	19.3	48,819	51852	1,411	1,724
	CB 12-16	56' 7"	17.2	66' 11"	20.4	52,078	55111	1,500	1,832
	CB 12-17	60' 1"	18.3	70' 5"	21.5	55,338	58371	1,589	1,941
	CB 12-18	63' 8"	19.4	74'	22.6	58,598	61631	1,677	2,049
	CB 12-19	67' 2"	20.5	77' 6"	23.6	61,857	64890	1,766	2,157
	CB 12-20	70' 9"	21.6	81' 1"	24.7	65,117	68150	1,855	2,266
	CB 12-21	74' 3"	22.6	84' 7"	25.8	68,377	71410	1,943	2,374
	CB 12-22	77' 9"	23.7	88' 1"	26.8	71,636	74669	2,032	2,482

Dia.	Bin Model #	HEIGHT				STORAGE CAPACITY			
		Eave (Ft.)	Eave (M)	Overall (Ft.)	Overall (M)	Level to Eave (Bushels)	Filled to Peak (Bushels)	Filled to Peak (M Ton)	Filled to Peak (Cub. M)
All Dia 40'3" (12.3m)	CB 13-4	14' 2"	4.3	25' 7"	7.8	15,212	19068	519	634
	CB 13-5	17' 8"	5.4	29' 1"	8.9	19,038	22894	623	761
	CB 13-6	21' 3"	6.5	32' 8"	10	22,864	26720	727	888
	CB 13-7	24' 9"	7.5	36' 2"	11	26,689	30545	831	1015
	CB 13-8	28' 3"	8.6	39' 8"	12.1	30,515	34371	935	1,143
	CB 13-9	31' 10"	9.7	43' 3"	13.2	34,340	38196	1040	1,270
	CB 13-10	35' 4"	10.8	46' 9"	14.2	38,166	42022	1,144	1,397
	CB 13-11	38' 11"	11.9	50' 4"	15.3	41,992	45848	1,248	1,524
	CB 13-12	42' 5"	12.9	53' 10"	16.4	45,817	49673	1,352	1,651
	CB 13-13	46'	14	57' 5"	17.5	49,643	53499	1,456	1,779
	CB 13-14	49' 6"	15.1	60' 11"	18.6	53,468	57325	1,560	1,906
	CB 13-15	53'	16.2	64' 5"	19.6	57,294	61150	1,664	2,033
	CB 13-16	56' 7"	17.2	68'	20.7	61,120	64976	1,768	2,160
	CB 13-17	60' 1"	18.3	71' 6"	21.8	64,945	68801	1,872	2,287
	CB 13-18	63' 8"	19.4	75' 1"	22.9	68,771	72627	1,977	2,414
	CB 13-19	67' 2"	20.5	78' 7"	24	72,596	76453	2,081	2,542
	CB 13-20	70' 9"	21.6	82' 2"	25	76,422	80278	2,185	2,669
	CB 13-21	74' 3"	22.6	85' 8"	26.1	80,248	84104	2,289	2,796
	CB 13-22	77' 9"	23.7	89' 2"	27.2	84,073	87929	2,393	2,923
	CB 13-23	81' 4"	24.8	92' 9"	28.3	87,899	91755	2,497	3,050

Chief Advantages:

Increased Operational Efficiency:

Chief Agri's Commercial Grain Storage solutions are geared towards enhancing your operational efficiency. With features like automated loading and unloading, you can streamline your workflow, saving time and resources

Preservation of Grain Quality:

Maintaining the quality of your harvested grain is paramount. Chief Agri's advanced storage systems ensure proper aeration and temperature control, preserving the quality of your grain and protecting your investment.

Sustainability and Cost-Effectiveness:

We prioritize sustainability by designing energy-efficient systems that reduce operational costs. Chief Agri helps you achieve a balance between productivity and environmental responsibility.

Dia.	Bin Model #	HEIGHT				STORAGE CAPACITY				
		Eave (Ft.)	Eave (M)	Overall (Ft.)	Overall (M)	Level to Eave (Bushels)	Filled to Peak (Bushels)	Filled to Peak (M Ton)	Filled to Peak (Cub. M)	
All Dia 43'4" (13.2m)	CB 14-11	38' 11"	11.9	51' 2"	15.6	48,700	53517	1,456	1,779	
	CB 14-12	42' 5"	12.9	54' 8"	16.7	53,137	57953	1,577	1,927	
	CB 14-13	46'	14	58' 3"	17.8	57,574	62390	1,698	2,074	
	CB 14-14	49' 6"	15.1	61' 9"	18.8	62,011	66827	1,819	2,222	
	CB 14-15	53'	16.2	65' 3"	19.9	66,448	71624	1,939	2,369	
	CB 14-16	56' 7"	17.2	68' 10"	21	70,884	75701	2,060	2,517	
	CB 14-17	60' 1"	18.3	72' 4"	22	75,321	80137	2,181	2,664	
	CB 14-18	63' 8"	19.4	75' 11"	23.1	79,758	84754	2,302	2,812	
	CB 14-19	67' 2"	20.5	79' 5"	24.2	84,195	89011	2,422	2,959	
	CB 14-20	70' 9"	21.6	83'	25.3	88,632	93448	2,543	3,107	
	CB 14-21	74' 3"	22.6	86' 6"	26.4	93,068	97885	2,664	3,254	
	CB 14-22	77' 9"	23.7	90'	27.4	97,505	102321	2,785	3,402	
	CB 14-23	81' 4"	24.8	93' 7"	28.5	101,942	106758	2,905	3,549	
	CB 14-24	84' 10"	25.9	97' 1"	29.6	106,379	111195	3,026	3,697	
	All Dia 49'6" (15.1m)	CB 16-11	38' 11"	11.9	53'	16.2	63,609	70798	1,927	2,354
		CB 16-12	42' 5"	12.9	56' 6"	17.2	69,404	76593	2,085	2,546
		CB 16-13	46'	14	60' 1"	18.3	75,199	82388	2,242	2,739
		CB 16-14	49' 6"	15.1	63' 7"	19.4	80,994	88183	2,400	2,932
		CB 16-15	53'	16.2	67' 1"	20.4	86,789	93978	2,558	3,124
		CB 16-16	56' 7"	17.2	70' 8"	21.5	92,584	99773	2,715	3,317
		CB 16-17	60' 1"	18.3	74' 2"	22.6	98,379	105568	2,873	3,510
		CB 16-18	63' 8"	19.4	77' 9"	23.7	104,174	111363	3,031	3,702
		CB 16-19	67' 2"	20.5	81' 3"	24.8	109,969	117158	3,189	3,895
CB 16-20		70' 9"	21.6	84' 10"	25.9	115,764	122953	3,346	4,087	
CB 16-21		74' 3"	22.6	88' 4"	26.9	121,559	128748	3,504	4,280	
CB 16-22		77' 9"	23.7	91' 10"	28	127,354	134543	3,662	4,473	
CB 16-23		81' 4"	24.8	95' 5"	29.1	133,149	140338	3,819	4,665	
CB 16-24		84' 10"	25.9	98' 11"	30.2	138,944	146133	3,977	4,858	
CB 16-25		88' 5"	27	102' 6"	31.2	144,739	151928	4,135	5,051	
CB 16-26		91' 11"	28	106'	32.3	150,534	157723	4,293	5,243	

Options available for peak load capacity of up to 100,000 lbs. (45,359 kg)



Dia.	Bin Model #	HEIGHT				STORAGE CAPACITY			
		Eave (Ft.)	Eave (M)	Overall (Ft.)	Overall (M)	Level to Eave (Bushels)	Filled to Peak (Bushels)	Filled to Peak (M Ton)	Filled to Peak (Cub. M)
All Dia 55' 8" (17m)	CB 18-10	35' 4"	10.8	50' 4"	15.3	73,170	83406	2,270	2,773
	CB 18-11	38' 11"	11.9	53' 11"	16.4	80,505	90741	2,470	3,017
	CB 18-12	42' 5"	12.9	57' 5"	17.5	87,839	98075	2,669	3,260
	CB 18-13	46'	14	61'	18.6	95,173	105409	2,869	3,504
	CB 18-14	49' 6"	15.1	64' 4"	19.6	102,508	112744	3,068	3,748
	CB 18-15	53'	16.2	68'	20.7	109,842	120078	3,268	3,992
	CB 18-16	56' 7"	17.2	71' 7"	21.8	117,176	127412	3,468	4,236
	CB 18-17	60' 1"	18.3	75' 1"	22.9	124,510	134747	3,667	4,480
	CB 18-18	63' 8"	19.4	78' 8"	24	131,845	142081	3,867	4,723
	CB 18-19	67' 2"	20.5	82' 2"	25	139,179	149715	4,066	4,967
	CB 18-20	70' 9"	21.6	85' 9"	26.1	146,513	156750	4,266	5,211
	CB 18-21	74' 3"	22.6	89' 3"	27.2	153,848	164804	4,466	5,455
	CB 18-22	77' 9"	23.7	92' 9"	28.3	161,182	171418	4,665	5,699
	CB 18-23	81' 4"	24.8	96' 4"	29.4	168,516	178753	4,865	5,943
	CB 18-24	84' 10"	25.9	99' 10"	30.4	175,851	186087	5,064	6,186
	CB 18-25	88' 5"	27	103' 5"	31.5	183,185	193421	5,264	6,430
	CB 18-26	91' 11"	28	106' 11"	32.6	190,519	200755	5,464	6,674
	CB 18-27	95' 6"	29.1	110' 6"	33.7	197,854	208090	5,663	6,918
	CB 18-28	99'	30.2	114'	34.8	205,188	215424	5,863	7,162
	CB 18-30	106' 1"	32.3	121' 1"	36.9	219,857	230093	6,262	7,649

Dia.	Bin Model #	HEIGHT				STORAGE CAPACITY			
		Eave (Ft.)	Eave (M)	Overall (Ft.)	Overall (M)	Level to Eave (Bushels)	Filled to Peak (Bushels)	Filled to Peak (M Ton)	Filled to Peak (Cub. M)
All Dia 61' 10" (18.9m)	CB 20-10	35' 4"	10.8	52' 1"	15.9	90,334	104375	3,841	3,470
	CB 20-11	38' 11"	11.9	55' 8"	17	99,388	113430	3,087	3,771
	CB 20-12	42' 5"	12.9	59' 2"	18	108,443	122484	3,333	4,072
	CB 20-13	46'	14	62' 9"	19.1	117,498	131539	3,580	4,373
	CB 20-14	49' 6"	15.1	66' 3"	20.2	126,552	140594	3,826	4,674
	CB 20-15	53'	16.2	69' 9"	21.3	135,607	149649	4,073	4,975
	CB 20-16	56' 7"	17.2	73' 4"	22.4	144,662	158703	4,319	5,276
	CB 20-17	60' 1"	18.3	76' 10"	23.4	153,717	167758	4,566	5,577
	CB 20-18	63' 8"	19.4	80' 5"	24.5	162,771	176813	4,812	5,878
	CB 20-19	67' 2"	20.5	83' 11"	25.6	171,826	185867	5,058	6,179
	CB 20-20	70' 9"	21.6	87' 6"	26.7	180,881	194922	5,305	6,480
	CB 20-21	74' 3"	22.6	91'	27.7	189,935	203977	5,551	6,781
	CB 20-22	77' 9"	23.7	94' 6"	28.8	198,990	213032	5,798	7,082
	CB 20-23	81' 4"	24.8	98' 1"	29.9	208,045	222086	6,044	7,383
	CB 20-24	84' 10"	25.9	101' 7"	31	217,100	231141	6,291	7,684
	CB 20-25	88' 5"	27	105' 2"	32	226,154	240196	6,537	7,985
	CB 20-26	91' 11"	28	108' 8"	33.1	235,209	249250	6,783	8,286
	CB 20-27	95' 6"	29.1	112' 3"	34.2	244,264	258305	7,030	8,587
	CB 20-28	99'	30.2	115' 9"	35.3	253,318	267360	7,276	8,888
	CB 20-29	102' 6"	31.2	119' 3"	36.4	262,373	276415	7,523	9,189

Unlocking Success: Chief Agri Dealer Testimonial

At Chief Agri, we take pride in delivering cutting-edge products that redefine the industry standard. Don't just take our word for it – hear it directly from our trusted dealers.

Why Chief Agri? Our Dealers Speak:

Discover the unparalleled quality, reliability, and innovation that Chief Agri brings to the field. Our dedicated dealers share their experiences and insights, shedding light on the transformative impact of Chief Agri products.

Testimonial Highlights:

- Unmatched Product Performance
- Dependable Support and Service
- Sustainable and Efficient Solutions





HEIGHT | STORAGE CAPACITY

Dia.	Bin Model #	Eave (Ft.)	Eave (M)	Overall (Ft.)	Overall (M)	Level to Eave (Bushels)	Filled to Peak (Bushels)	Filled to Peak (M Ton)	Filled to Peak (Cub. M)
All Dia 68' 1" (20.7m)	CB 22-10	35' 4"	10.8	53' 11"	16.4	109,304	127993	3,483	4,255
	CB 22-11	38' 11"	11.9	57' 6"	17.5	120,260	138949	3,782	4,619
	CB 22-12	42' 5"	12.9	61'	18.6	131,216	149905	4,080	4,984
	CB 22-13	46'	14	64' 7"	19.7	142,172	160861	4,378	5,348
	CB 22-14	49' 6"	15.1	68' 1"	20.8	153,129	171818	4,676	5,712
	CB 22-15	53'	16.2	71' 7"	21.8	164,085	182774	4,974	6,076
	CB 22-16	56' 7"	17.2	75' 2"	22.9	175,041	193730	5,272	6,440
	CB 22-17	60' 1"	18.3	78' 8"	24	185,997	204686	5,571	6,805
	CB 22-18	63' 8"	19.4	82' 3"	25.1	196,953	215642	5,869	7,169
	CB 22-19	67' 2"	20.5	85' 9"	26.1	207,909	226599	6,167	7,533
	CB 22-20	70' 9"	21.6	89' 4"	27.2	218,866	237555	6,465	7,897
	CB 22-21	74' 3"	22.6	92' 10"	28.3	229,822	248511	6,763	8,262
	CB 22-22	77' 9"	23.7	96' 4"	29.4	240,778	259467	7,062	8,626
	CB 22-23	81' 4"	24.8	99' 11"	30.4	251,734	270423	7,360	8,990
	CB 22-24	84' 10"	25.9	103' 5"	31.5	262,690	281380	7,658	9,354
	CB 22-25	88' 5"	27	107'	32.6	273,647	292336	7,956	9,719
	CB 22-26	91' 11"	28	110' 6"	33.7	284,603	303292	8,254	10,083
	CB 22-27	95' 6"	29.1	114' 1"	34.8	295,559	314248	8,552	10,447
	CB 22-28	99'	30.2	117' 7"	35.8	306,515	325204	8,851	10,811
	CB 22-29	102' 6"	31.2	121' 1"	36.9	317,471	336161	9,149	11,175
CB 22-30	106' 1"	32.3	124' 8"	38	328,428	347117	9,447	11,540	

HEIGHT | STORAGE CAPACITY

Dia.	Bin Model #	Eave (Ft.)	Eave (M)	Overall (Ft.)	Overall (M)	Level to Eave (Bushels)	Filled to Peak (Bushels)	Filled to Peak (M Ton)	Filled to Peak (Cub. M)
All Dia 74' 3" (22.6m)	CB 24-10	35' 4"	10.8	55' 8"	17	130,080	154344	4,201	5,131
	CB 24-11	38' 11"	11.9	59' 3"	18.1	143,119	167383	4,555	5,565
	CB 24-12	42' 5"	12.9	62' 9"	19.1	156,158	180422	4,910	5,998
	CB 24-13	46'	14	66' 4"	20.2	169,197	193460	5,265	6,431
	CB 24-14	49' 6"	15.1	69' 10"	21.3	182,236	206499	5,620	6,865
	CB 24-15	53'	16.2	73' 4"	22.4	195,274	219538	5,975	7,298
	CB 24-16	56' 7"	17.2	76' 11"	23.4	208,313	232577	6,330	7,732
	CB 24-17	60' 1"	18.3	80' 5"	24.5	221,352	245615	6,685	8,165
	CB 24-18	63' 8"	19.4	84'	25.6	234,391	258654	7,039	8,599
	CB 24-19	67' 2"	20.5	87' 6"	26.7	247,429	271693	7,394	9,032
	CB 24-20	70' 9"	21.6	91' 1"	27.8	260,468	284732	7,749	9,466
	CB 24-21	74' 3"	22.6	94' 7"	28.8	273,507	297771	8,104	9,899
	CB 24-22	77' 9"	23.7	98' 1"	29.9	286,546	310809	8,459	10,333
	CB 24-23	81' 4"	24.8	101' 8"	31	299,585	323848	8,814	10,766
	CB 24-24	84' 10"	25.9	105' 2"	32	312,623	336887	9,169	11,200
	CB 24-25	88' 5"	27	108' 9"	33.2	325,662	349926	9,523	11,633
	CB 24-26	91' 11"	28	112' 3"	34.2	338,701	362965	9,878	12,067
	CB 24-27	95' 6"	29.1	115' 10"	35.3	351,740	376003	10,233	12,500
	CB 24-28	99'	30.2	119' 4"	36.4	364,778	389042	10,588	12,933
	CB 24-29	102' 6"	31.2	122' 10"	37.4	377,817	402081	10,943	13,367
CB 24-30	106' 1"	32.3	126' 5"	38.5	390,856	415120	11,298	13,800	



Dia.	Bin Model #	HEIGHT			STORAGE CAPACITY				
		Eave (Ft.)	Eave (M)	Overall (Ft.)	Overall (M)	Level to Eave (Bushels)	Filled to Peak (Bushels)	Filled to Peak (M Ton)	Filled to Peak (Cub. M)
All Dia 80" (24.5m)	CB 26-10	35' 4"	10.8	57' 6"	17.5	152,664	183513	4,994	6,101
	CB 26-11	38' 11"	11.9	61' 1"	18.6	167,966	198815	5,411	6,609
	CB 26-12	42' 5"	12.9	64' 7"	19.7	183,269	214118	5,827	7,118
	CB 26-13	46'	14	68' 2"	20.8	198,571	229420	6,244	7,627
	CB 26-14	49' 6"	15.1	71' 8"	21.8	213,874	244723	6,660	8,136
	CB 26-15	53'	16.2	75' 2"	22.9	229,176	260025	7,077	8,644
	CB 26-16	56' 7"	17.2	78' 9"	24	244,479	275328	7,493	9,153
	CB 26-17	60' 1"	18.3	82' 3"	25.1	259,781	290630	7,910	9,662
	CB 26-18	63' 8"	19.4	85' 10"	26.2	275,084	305933	8,326	10,171
	CB 26-19	67' 2"	20.5	89' 4"	27.2	290,386	321235	8,743	10,679
	CB 26-20	70' 9"	21.6	92' 11"	28.3	305,688	336537	9,159	11,188
	CB 26-21	74' 3"	22.6	96' 5"	29.4	320,991	351840	9,576	11,697
	CB 26-22	77' 9"	23.7	99' 11"	30.4	336,293	367142	9,992	12,205
	CB 26-23	81' 4"	24.8	103' 6"	31.6	351,596	382445	10,408	12,714
	CB 26-24	84' 10"	25.9	107'	32.6	366,898	397747	10,825	13,223
	CB 26-25	88' 5"	27	110' 7"	33.7	382,201	413050	11,241	13,732
	CB 26-26	91' 11"	28	114' 1"	34.8	397,503	428352	11,658	14,240
	CB 26-27	95' 6"	29.1	117' 8"	35.9	412,806	443655	12,074	14,749
	CB 26-28	99'	30.2	121'	36.9	428,108	458957	12,491	15,258
	CB 26-29	102' 6"	31.2	124' 8"	38	443,411	474260	12,907	15,766
CB 26-30	106' 1"	32.3	128' 3"	39.1	458,713	489562	13,324	16,275	

Dia.	Bin Model #	HEIGHT			STORAGE CAPACITY				
		Eave (Ft.)	Eave (M)	Overall (Ft.)	Overall (M)	Level to Eave (Bushels)	Filled to Peak (Bushels)	Filled to Peak (M Ton)	Filled to Peak (Cub. M)
All Dia 92" (28.3m)	CB 30-10	35' 4"	10.8	61'	18.6	203,251	250641	6,821	8,332
	CB 30-11	38' 11"	11.9	64' 7"	19.7	223,624	271014	7,376	9,010
	CB 30-12	42' 5"	12.9	68' 1"	20.8	243,997	291387	7,930	9,687
	CB 30-13	46'	14	71' 7"	21.8	264,370	311760	8,485	10,364
	CB 30-14	49' 6"	15.1	75' 2"	22.9	284,743	332133	9,039	11,042
	CB 30-15	53'	16.2	78' 8"	24	305,116	352506	9,594	11,719
	CB 30-16	56' 7"	17.2	82' 3"	25.1	325,489	372879	10,148	12,396
	CB 30-17	60' 1"	18.3	85' 9"	26.1	345,862	393252	10,703	13,073
	CB 30-18	63' 8"	19.4	89' 4"	27.2	366,235	413625	11,257	13,751
	CB 30-19	67' 2"	20.5	92' 10"	28.3	386,609	433998	11,812	14,428
	CB 30-20	70' 9"	21.6	96' 5"	29.4	406,982	454371	12,366	15,105
	CB 30-21	74' 3"	22.6	99' 11"	30.4	427,355	474745	12,920	15,783
	CB 30-22	77' 9"	23.7	103' 5"	31.5	447,728	495118	13,475	16,460
	CB 30-23	81' 4"	24.8	107'	32.6	468,101	515491	14,029	17,137
	CB 30-24	84' 10"	25.9	110' 6"	33.7	488,474	535864	14,584	17,814
	CB 30-25	88' 5"	27	114' 1"	34.8	508,847	556237	15,138	18,492
	CB 30-26	91' 11"	28	117' 7"	35.8	529,220	576610	15,693	19,169
	CB 30-27	95' 6"	29.1	121' 2"	36.9	549,593	596983	16,247	19,846
	CB 30-28	99'	30.2	124' 8"	38	569,966	617356	16,802	20,524
	CB 30-29	102' 6"	31.2	128' 2"	39.1	590,339	637729	17,356	21,201
CB 30-30	106' 1"	32.3	131' 9"	40.2	610,713	658102	17,911	21,878	



Dia.	Bin Model #	HEIGHT				STORAGE CAPACITY			
		Eave (Ft.)	Eave (M)	Overall (Ft.)	Overall (M)	Level to Eave (Bushels)	Filled to Peak (Bushels)	Filled to Peak (M Ton)	Filled to Peak (Cub. M)
All Dia 105'2" (32.05m)	CB 34-12	42' 5"	12.9	71' 8"	21.8	313,400	382386	10,407	12,712
	CB 34-13	46'	14	75' 3"	22.9	339,569	408554	11,119	13,582
	CB 34-14	49' 6"	15.1	78' 9"	24	365,737	434722	11,831	14,452
	CB 34-15	53'	16.2	82' 3"	25.1	391,905	460890	12,543	15,322
	CB 34-16	56' 7"	17.2	85' 10"	26.2	418,073	487058	13,256	16,192
	CB 34-17	60' 1"	18.3	89' 4"	27.2	444,241	513226	13,968	17,062
	CB 34-18	63' 8"	19.4	92' 11"	28.3	470,409	539395	14,680	17,932
	CB 34-19	67' 2"	20.5	96' 5"	29.4	496,577	565563	15,392	18,802
	CB 34-20	70' 9"	21.6	100'	30.5	522,745	591731	16,104	19,672
	CB 34-21	74' 3"	22.6	103' 6"	31.6	548,913	617899	16,816	20,542
	CB 34-22	77' 9"	23.7	107'	32.6	575,082	644067	17,529	21,412
	CB 34-23	81' 4"	24.8	110' 7"	33.7	601,250	670235	18,241	22,282
	CB 34-24	84' 10"	25.9	114' 1"	34.8	627,418	696403	18,953	23,152
	CB 34-25	88' 5"	27	117' 8"	35.9	653,586	722571	19,665	24,021
	CB 34-26	91' 11"	28	121' 2"	36.9	679,754	748739	20,377	24,891
	CB 34-27	95' 6"	29.1	124' 9"	38	705,922	774908	21,090	25,761
	CB 34-28	99'	30.2	128' 3"	39.1	732,090	801076	21,802	26,631
	CB 34-29	102' 8"	31.3	130' 11"	39.9	758942	827927	22533	27524
	CB 34-30	106' 2"	32.4	134' 5"	41.0	785110	854095	23245	28394
	All Dia 123'9" (37.72m)	CB40-15	53' 1"	16.17	85' 7"	26.1	542,432	654,764	16,631
CB40-16		56' 7"	17.24	89' 2"	27.18	578,651	690,982	17,551	22,974
CB40-17		60' 2"	18.32	92' 8"	28.24	614,870	727,201	18,471	24,178
CB40-18		63' 8"	19.4	96' 3"	29.34	651,089	763,420	19,391	25,382
CB40-19		67' 3"	20.48	99' 9"	30.4	687,308	799,639	20,311	26,587
CB40-20		70' 9"	21.55	103' 3"	31.47	723,526	835,858	21,231	27,791
CB40-21		74' 4"	22.63	106' 10"	32.56	759,745	872,077	22,151	28,995
CB40-22		77' 10"	23.71	110' 4"	33.63	795,964	908,295	23,071	30,199
CB40-23		81' 4"	24.79	113' 11"	34.72	832,183	944,514	23,991	31,404
CB40-24		84' 11"	25.86	117' 5"	35.79	868,402	980,733	24,911	32,608
CB40-25		88' 5"	26.94	121' 0"	36.88	904,621	1,016,952	25,831	33,812

Dia.	Bin Model #	HEIGHT				STORAGE CAPACITY			
		Eave (Ft.)	Eave (M)	Overall (Ft.)	Overall (M)	Level to Eave (Bushels)	Filled to Peak (Bushels)	Filled to Peak (M Ton)	Filled to Peak (Cub. M)
All Dia 139'3" (42.4m)	CB45-15	53' 0"	16.2	89' 7"	27.3	686,523	846,463	21,500	28,143
	CB45-16	56' 7"	17.2	93' 1"	28.4	732,263	892,303	22,665	29,667
	CB45-17	60' 1"	18.3	96' 8"	29.5	778,203	938,143	23,829	31,191
	CB45-18	63' 8"	19.4	100' 2"	30.5	824,043	983,983	24,993	32,716
	CB 45-19	67' 2"	20.5	103' 9"	31.6	869,869	1029810	28,027	34,235
	CB 45-20	70' 9"	21.6	107' 3"	32.7	915,709	1075649	29,274	35,760
	CB 45-21	74' 3"	22.6	110' 11"	33.8	961,548	1121489	30,522	37,283
	CB 45-22	77' 11"	23.7	115' 0"	35.1	1008590	1168530	31802	38847
	CB 45-23	81' 5"	24.8	118' 7"	36.1	1054428	1214369	33050	40371
	CB 45-24	84' 11"	25.9	122' 1"	37.2	1100267	1260208	34297	41895
	CB 45-25	88' 6"	27.0	125' 8"	38.3	1146106	1306047	35545	43419
	CB 45-26	92' 0"	28.0	129' 2"	39.4	1191945	1351885	36792	44943
	CB 45-27	95' 7"	29.1	132' 9"	40.5	1237784	1397724	38040	46467
	CB 45-28	99' 1"	30.2	136' 3"	41.5	1283623	1443563	39287	47990
	CB 45-29	102' 8"	31.3	139' 9"	42.6	1329461	1489402	40535	49514
	CB 45-30	106' 2"	32.4	143' 4"	43.7	1375300	1535241	41782	51038

Explore a Diverse Range of Chief Commercial Bins, Precision-Crafted to Meet Your Unique Agricultural Demands!

**Behind the Scenes:
Chief Agri 'How It's Made' Video**

Dive into the heart of Chief Agri with our 'How It's Made' video. Scan the QR code for an exclusive look at the precision and innovation shaping our agricultural solutions.



How it's Made

HOPPER TANKS

For an exceptional value Chief Commercial Hopper Tanks are the smart choice!

Commercial hopper tanks from Chief Agri offer the same ease of installation and unparalleled strength found in the Chief commercial grain bin line. Engineered from the highest quality materials, they provide the long term reliability and satisfaction you've come to expect from Chief. For wet holding, storage, or load-out, contact Chief to maximize your storage dollars.

Up to 61050 bushel capacity (1551 M Ton)

The exclusive Chief exterior "W" stiffener is almost twice as strong as the closest competing stiffener.

Sidewall sheets are G115 with 70 ksi tensile strength, same as bins.

Chief commercial hopper tanks utilize a standard powder coated or optional hot-dipped galvanized substructure with welded legs and ring beams. A "Super Structure" is available for use in drive-under applications.

G115 on sidewalls, stiffeners, and roof panels for superior corrosion resistance. Optional upgrade to G210 galvanized steel.

A 45° bottom hopper cone and a 16" (406 mm) discharge opening are standard with Chief commercial hopper tanks. 60° hopper cone available on certain models.

Up to 25,000 lbs. (11340 kg) Peak Load
One of the Highest in the Industry!



MEDIUM-DUTY HOPPER TANKS

Chief's V-rib roof design uses over 30% more ribs than leading competitors, providing a cover of exceptional strength for smaller bins without a structured roof.

- Easy to install.
- A cost-effective solution built with superior strength.
- Wide range of capacities adaptable for different applications, commodities, and more!



Chief Commercial Hopper Tank Capacity Chart

	Model #	HEIGHT				STORAGE CAPACITY				
		Eave Height (ft)	Overall Height (ft)	Eave Height (M)	Overall Height (M)	Eave Capacity (Bushels)	Peak Capacity (Bushels)	Eave Capacity (M)	Peak Capacity (M)	To Peak (metric ton)
Diameter 15'6" (4.7m) Leg Height 10'3" Cone Cap 360 Bushels	CHT 5-4	24' 4"	29' 3"	7.42	8.92	2632	2851	87	95	72
	CHT 5-5	27' 11"	32' 4"	8.51	9.86	3198	3417	106	114	87
	CHT 5-6	31' 6"	35' 11"	9.6	10.95	3764	3983	125	132	101
	CHT 5-7	35'	39' 5"	10.67	12.01	4330	4549	144	151	116
	CHT 5-8	38' 6"	43'	11.73	13.11	4896	5115	163	170	130
	CHT 5-9	42' 1"	46' 6"	12.83	14.17	5462	5681	182	189	144
	CHT 5-10	45' 7"	50' 1"	13.89	15.27	6028	6247	200	208	159
	CHT 5-11	49' 1"	53' 7"	14.96	16.33	6593	6813	219	226	173
Diameter 18'7" (5.7M) Leg Height 11'11" Cone Cap 652 Bushels	CHT 6-5	28' 8"	35'	8.74	10.67	4747	5126	158	170	130
	CHT 6-6	31' 6"	38' 6"	9.6	11.73	5562	5941	185	198	151
	CHT 6-7	36' 9"	42' 1"	11.2	12.83	6376	6756	212	225	172
	CHT 6-8	40' 3"	45' 7"	12.27	13.89	7191	7570	239	252	192
	CHT 6-9	43' 10"	49' 2"	13.36	14.99	8006	8385	266	279	213
	CHT 6-10	47' 4"	52' 8"	14.43	16.05	8821	9200	293	306	234
	CHT 6-11	50' 11"	56' 2"	15.52	17.12	9636	10015	320	333	254
	CHT 6-12	54' 5"	59' 9"	16.59	18.21	10451	10830	347	360	275
Diameter 21'8" (6.6M) Leg Height 13'8" Cone Cap 1057 Bushels	CHT 7-5	31' 4"	37' 7"	9.55	11.46	6640	7242	221	241	184
	CHT 7-6	34' 11"	41' 2"	10.64	12.55	7750	8352	258	278	212
	CHT 7-7	38' 5"	44' 8"	11.71	13.61	8859	9461	295	315	240
	CHT 7-8	41' 11"	48' 2"	12.78	14.68	9968	10570	331	351	268
	CHT 7-9	45' 6"	51' 9"	13.87	15.77	11077	11679	368	388	297
	CHT 7-10	49' 1"	55' 3"	14.96	16.84	12186	12788	405	425	325
	CHT 7-11	52' 7"	58' 10"	16.03	17.93	13296	13898	442	462	353
	CHT 7-12	56' 1"	62' 4"	17.09	19	14405	15007	479	499	381
CHT 7-13	59' 8"	65' 11"	18.19	20.09	15514	16116	516	536	409	
CHT 7-14	63' 2"	69' 5"	19.25	21.16	16623	17225	553	573	438	

NOTE: Metric ton capacity is based on a density of 56 lbs/ bushel (721 Kg/m³). All capacities are based on a 6% compaction factor unless otherwise noted.

	Model #	HEIGHT				STORAGE CAPACITY				
		Eave Height (ft)	Overall Height (ft)	Eave Height (M)	Overall Height (M)	Eave Capacity (Bushels)	Peak Capacity (Bushels)	Eave Capacity (M)	Peak Capacity (M)	To Peak (metric ton)
Diameter 24'9" (7.5M) Leg Height 15'1" Cone Cap 1583 Bushels	CHT 8-5	32' 9"	39' 11"	9.98	12.17	8888	9786	295	325	249
	CHT 8-6	36' 4"	43' 6"	11.07	13.26	10336	11235	344	373	285
	CHT 8-7	39' 10"	47'	12.14	14.33	11785	12684	392	422	322
	CHT 8-8	43' 5"	50' 6"	13.23	15.39	13234	14133	440	470	359
	CHT 8-9	46' 11"	54' 1"	14.3	16.48	14683	15581	488	518	396
	CHT 8-10	50' 6"	57' 7"	15.39	17.55	16132	17030	536	566	433
	CHT 8-11	54'	61' 2"	16.46	18.64	17580	18479	584	614	469
	CHT 8-12	57' 6"	64' 8"	17.53	19.71	19029	19928	633	662	506
	CHT 8-13	61' 1"	68' 3"	18.62	20.8	20478	21376	681	711	543
	CHT 8-14	64' 7"	71' 9"	19.69	21.87	21927	22825	729	759	580
Diameter 27'10" (8.5M) Leg Height 17'0" Cone Cap 2306 Bushels	CHT 9-5	34' 8"	42' 9"	10.57	13.03	11569	12849	385	427	326
	CHT 9-6	38' 3"	46' 3"	11.66	14.1	13403	14682	446	488	373
	CHT 9-7	41' 9"	49' 10"	12.73	15.19	15236	16516	507	549	420
	CHT 9-8	45' 4"	53' 4"	13.82	16.26	17070	18349	567	610	466
	CHT 9-9	48' 10"	56' 11"	14.88	17.35	18904	20183	628	671	513
	CHT 9-10	52' 5"	60' 5"	15.98	18.42	20737	22017	689	732	559
	CHT 9-11	55' 11"	63' 11"	17.04	19.48	22571	23850	750	793	606
	CHT 9-12	59' 6"	67' 6"	18.14	20.57	24404	25684	811	854	652
	CHT 9-13	63'	71'	19.2	21.64	26238	27517	872	915	699
	CHT 9-14	66' 6"	74' 7"	20.27	22.73	28071	29355	933	976	746

NOTE: Metric ton capacity is based on a density of 56 lbs/ bushel (721 Kg/m³). All capacities are based on a 6% compaction factor unless otherwise noted.



	Model #	HEIGHT				STORAGE CAPACITY				
		Eave Height (ft)	Overall Height (ft)	Eave Height (M)	Overall Height (M)	Eave Capacity (Bushels)	Peak Capacity (Bushels)	Eave Capacity (M)	Peak Capacity (M)	To Peak (metric ton)
Diameter 30"11" (9.4M) Leg Height 189" Cone Cap 3194 Bushels	CHT 10-6	39' 11"	48' 10"	12.17	14.88	16915	18670	562	621	474
	CHT 10-7	43' 6"	52' 5"	13.26	15.98	19178	20933	638	696	532
	CHT 10-8	47'	55' 11"	14.33	17.04	21442	23197	713	771	589
	CHT 10-9	50' 6"	59' 6"	15.39	18.14	23706	25461	788	846	647
	CHT 10-10	54' 1"	63'	16.48	19.2	25969	27724	863	922	704
	CHT 10-11	57' 7"	66' 6"	17.55	20.27	28233	29988	939	997	762
	CHT 10-12	61' 2"	70' 1"	18.64	21.36	30497	32252	1,014	1,072	819
	CHT 10-13	64' 8"	73' 7"	19.71	22.43	32760	34515	1,089	1,147	877
	CHT 10-14	68' 3"	77' 2"	20.8	23.52	35024	36779	1,164	1,223	934
	CHT 10-15	71' 9"	80' 8"	21.87	24.59	37288	39043	1,240	1,298	992
	CHT 10-16	75' 4"	84' 3"	22.96	25.68	39551	41307	1,315	1,373	1,049
Diameter 37"1" (11.3M) Leg Height 225" Cone Cap 5604 Bushels	CHT 12-5	40' 1"	50' 9"	12.22	15.47	22162	25195	737	838	640
	CHT 12-6	43' 7"	54' 4"	13.28	16.56	25422	28455	845	946	723
	CHT 12-7	47' 2"	57' 10"	14.38	17.63	28682	31715	954	1,054	806
	CHT 12-8	50' 7"	61' 5"	15.42	18.72	31941	34974	1,062	1,163	888
	CHT 12-9	54' 3"	64' 11"	16.54	19.79	35201	38234	1,170	1,271	971
	CHT 12-10	57' 9"	68' 5"	17.6	20.85	38461	41494	1,279	1,379	1,054
	CHT 12-11	61' 4"	72'	18.69	21.95	41720	44753	1,387	1,488	1,137
	CHT 12-12	64' 10"	75' 6"	19.76	23.01	44980	48013	1,495	1,596	1,220
	CHT 12-13	68' 4"	79' 1"	20.83	24.1	48240	51273	1,604	1,705	1,302
	CHT 12-14	71' 11"	82' 7"	21.92	25.17	51499	54532	1,712	1,813	1,385
	CHT 12-15	75' 5"	86' 5"	22.99	26.34	54759	57791	1,820	1,921	1,468
CHT 12-16	78'	89' 8"	23.77	27.33	58017	61050	1,929	2,030	1,551	



NOTE (Tables on page 21):
Metric ton capacity is based on a density of 56 lbs./ bushel (721 kg/m3).
All capacities are based on a 6% compaction factor unless otherwise noted.
All MDHT have 16" Discharge Collars with 3' (0.9M) Clearance under discharge collar

Medium Duty Hopper Tank Capacity Chart

	Chief Diameter		Height			Storage Capacity			
	Bin Model #	Eave (FT)	Eave (M)	Overall (FT)	Overall (M)	Filled to Peak (BU)	Filled to Peak (CuFt)	Filled to Peak (CuM)	Filled to Peak (MT)
15'-6" (45deg)	MDHT 5-2	16'-11"	5.1	21'-4"	6.5	1665	1955	55	42
	MDHT 5-3	20'-6"	6.3	24'-10"	7.6	2294	2693	76	58
	MDHT 5-4	27'-6"	8.4	31'-11"	9.7	2797	3284	93	71
	MDHT 5-5	24'-1"	7.3	28'-5"	8.6	3363	3948	112	85
	MDHT 5-6	31'-1"	9.5	35'-5"	10.8	3929	4613	131	100
	MDHT 5-7	35'-1"	10.7	39'-5"	12.0	3899	4578	130	99
	MDHT 5-8	38'-7"	11.8	42'-11"	13.1	5124	6016	170	130
	MDHT 5-9	42'-1"	18.8	46'-5"	14.2	5690	6680	189	145
15'-6" (60deg)	MDHT 5-2	22'1"	6.7	26'6"	8.1	1942	2280	65	49
	MDHT 5-3	25'8"	7.8	30'0"	9.1	2507	2943	83	64
	MDHT 5-4	29'3"	8.9	37'1"	11.3	3073	3608	102	78
	MDHT 5-5	32'8"	10.0	33'7"	10.2	3639	4273	121	92
	MDHT 5-6	36'3"	11.0	40'7"	12.4	4205	4937	140	107
	MDHT 5-7	40'3"	12.3	44'7"	13.6	4771	5601	159	121
	MDHT 5-8	43'9"	13.3	48'1"	14.7	5400	6340	180	137
	MDHT 5-9	47'3"	14.4	51'7"	15.7	5966	7004	198	152
18'-7" (45deg)	MDHT 6-3	22'-0"	6.7	27'-3"	8.3	3395	3986	113	86
	MDHT 6-4	25'-6"	7.8	30'-10"	9.4	4210	4943	140	107
	MDHT 6-5	29'-0"	8.9	34'-4"	10.5	5025	5899	167	128
	MDHT 6-6	32'-7"	9.9	37'-11"	11.5	5840	6856	194	148
	MDHT 6-7	36'-6"	11.1	41'-10"	12.7	6746	7920	224	171
	MDHT 6-8	40'-0"	12.2	45'-4"	13.8	7561	8877	251	192
	MDHT 6-9	43'-7"	13.3	48'-11"	14.9	8376	9834	278	213
	MDHT 7-3	23'-6"	7.2	29'-9"	9.1	4869	5716	162	124
21'-8" (45deg)	MDHT 7-4	27'-1"	8.2	33'-3"	10.1	5978	7018	199	152
	MDHT 7-5	30'-7"	9.3	36'-10"	11.2	7088	8321	236	180
	MDHT 7-6	34'-1"	10.4	40'-4"	12.3	8197	9623	272	208
	MDHT 7-7	38'-1"	11.6	44'-3"	13.5	9430	11071	313	240
	MDHT 7-8	41'-7"	12.7	47'-10"	14.6	10539	12373	350	268
	MDHT 7-9	45'-1"	13.8	51'-4"	15.6	11648	13675	387	296

Medium Duty Hopper Tank Capacity Chart

	Even Diameter		Height			Storage Capacity			
	Bin Model #	Eave (FT)	Eave (M)	Overall (FT)	Overall (M)	Filled to Peak (BU)	Filled to Peak (CuFt)	Filled to Peak (CuM)	Filled to Peak (MT)
15' (45deg)	MDHTE 5-2	16'-7"	5.1	20'-10"	6.4	1529	1795	51	39
	MDHTE 5-3	20'-2"	6.1	24'-5"	7.4	2056	2414	68	52
	MDHTE 5-4	23'-8"	7.2	27'-11"	8.5	2582	3031	86	66
	MDHTE 5-5	27'-3"	8.3	31'-6"	9.6	3109	3650	103	79
	MDHTE 5-6	30'-9"	9.4	35'-0"	10.7	3694	4337	123	94
	MDHTE 5-7	34'-8"	10.6	38'-11"	11.9	4162	4886	138	106
	MDHTE 5-8	38'-3"	11.6	42'-6"	12.9	4747	5573	158	121
	MDHTE 5-9	41'-9"	12.7	46'-0"	14.0	5274	6192	175	134
15' (60deg)	MDHTE 5-2	21'9"	6.6	26'0"	7.9	1776	2085	59	45
	MDHTE 5-3	25'4"	7.7	29'7"	9.0	2302	2703	77	58
	MDHTE 5-4	28'10"	8.8	33'1"	10.1	2829	3321	94	72
	MDHTE 5-5	32'5"	9.9	36'8"	11.2	3356	3940	112	85
	MDHTE 5-6	35'11"	10.9	40'2"	12.2	3882	4558	129	99
	MDHTE 5-7	39'10"	12.1	44'1"	13.4	4409	5176	147	112
	MDHTE 5-8	43'5"	13.2	47'8"	14.5	4994	5683	161	127
	MDHTE 5-9	46'11"	14.3	51'2"	15.6	5521	6482	184	140
18' (45deg)	MDHTE 6-3	21'-9"	6.6	26'-9"	8.2	3123	3666	104	79
	MDHTE 6-4	25'-3"	7.7	30'-4"	9.2	3882	4558	129	99
	MDHTE 6-5	28'-10"	8.8	33'-10"	10.3	4640	5447	154	118
	MDHTE 6-6	32'-4"	9.9	37'-5"	11.4	5398	6337	179	137
	MDHTE 6-7	36'-3"	11.1	41'-4"	12.6	6240	7327	207	158
	MDHTE 6-8	39'-10"	12.1	44'-10"	13.7	6999	8217	233	178
	MDHTE 6-9	43'-4"	13.2	48'-5"	14.7	7758	9108	258	197
	MDHTE 7-3	23'-3"	7.1	29'-1"	8.9	4474	5253	149	114
21' (45deg)	MDHTE 7-4	26'-9"	8.2	32'-8"	10.0	5506	6464	183	140
	MDHTE 7-5	30'-4"	9.2	36'-2"	11.0	6538	7676	217	166
	MDHTE 7-6	33'-10"	10.3	39'-9"	12.1	7570	8887	252	192
	MDHTE 7-7	37'-9"	11.5	43'-8"	13.3	8717	10234	290	221
	MDHTE 7-8	41'-4"	12.6	47'-2"	14.4	9749	11446	324	248
	MDHTE 7-9	44'-10"	13.7	50'-9"	15.5	10782	12658	358	274

LEMANCO MODULAR BIN SYSTEMS



Complete Dry Bulk Storage Systems

Discover Chief Agri's Lemanco Modular Bin Systems for reliable and efficient dry bulk storage.

Modular Design: Easily expand or modify to accommodate evolving storage needs.

Durable Construction: High-quality materials ensure longevity and withstand bulk material storage demands.

Efficient Material Flow: Optimized for smooth and reliable material flow, reducing downtime.

Warehouse and Structures

Complement your storage system with Chief Agri's tailored warehouse and structure options.

Customizable Solutions: Integrate additional space for processing, packaging, or equipment.

Structural Integrity: Meet or exceed industry standards for enhanced reliability and safety.

Climate-Controlled Options: Ensure optimal conditions for specific materials.

Custom Design per Site and Customer Requirement

Get a tailored solution that fits your site and operational needs.

Site-Specific Design: Optimize for topography, space constraints, and access requirements.

Customer-Driven Solutions: Incorporate your preferences for material handling, automation, and more.

Compliance and Safety: Meet or exceed industry standards for a safe and compliant storage facility.



BIN SYSTEM

Modular bin options include 6', 7', 8', 10', and 12' (1.83 m, 2.13 m, 2.44 m, 3.05 m and 3.66 m) with half and quarter bin compartments available.

Factory welded one-piece hoppers for 6' - 10' (1.83 m - 3.05 m) require no field assembly. Optional two-piece or bolt-together hoppers are available.

Standard hoppers have 60° slope and internal corner chamfers. Chief welded hoppers do not require field assembly.

Vented galvanized man way with easy access inspection port and filter. (Shipped loose)
Conforms to NFPA 61 (Section 9.3.9.4)

Structural steel supports are designed to meet seismic categories and wind loadings per ASCE. All structural members are fully coated. A325 fasteners are included. (Chief estimates these minimum loading requirements based on tabulated values in ASCE 7-16.)

Flexibility, Future Expandability!

BIN SYSTEM OPTIONS

Standard safety equipment includes ladders, cages, platform safety gates, handrails, and optional fall arrest systems that meet OSHA requirements.

Standard suspended weigh hoppers come in 6', 7', or 8' (1.83 m, 2.13 m, 2.44 m) sizes with flare tops or header boxes/covers, including canvas connectors and vents with filters. Support frame, shafts, wheels, and drive package are provided for weigh lorries. Exterior is coated with gray enamel and interior with linseed oil.

Optional stainless steel or epoxy coated bins are available for storing corrosive bulk materials.

Standard adaptors are 2-to-1 and/or 4-to-1, welded and coated with gray enamel on exterior and linseed oil on interior.



FANS

Caldwell Fans

Safe, reliable, and attractive. With over 61 years of manufacturing experience, Caldwell fans and heaters assure system performance, dependable service, and acceptance throughout the world.

- Galvanized housings
- Motors from industry-leading manufacturers
- Available for 230, 460, or 575 volt 60 hz, and 380 volt 50 hz applications
- CSA approved, PAMI tested
- Meets OSHA standards



Right Fan for the Right Job!

Caldwell aeration has been one of the most recognized aeration brands since its founding in 1961.

Axial Fans

Caldwell axial fans range in diameters from 12" to 28" (305 mm to 711 mm) to fit any application.

- 3500 rpm at 60 hz operation
- Single and three-phase TEAO motors ranging in horsepower from .75 to 12.5
- Heavy gauge galvanized housing built to last

Centrifugal Fans

Designed for farm and commercial use. Centrifugal fans operate quieter and allow for easy field upgrades with heaters.

- For deep grain depths, fan operation to static pressures up to 33" water column
- 1750 rpm / 3500 rpm at 60 hz and 1450 rpm / 2900 rpm at 50 hz
- Wheels from 15" to 40" (381 mm to 1016 mm) diameter
- 3 to 100 horsepower models
- Single and three-phase TEFC motors, PTO units available
- 230 volt models are pre-wired for heaters



Inline Centrifugal Fans

Compact and quiet, Caldwell inline centrifugal fans are ideal for medium to high static pressures and allow for easy field upgrades with low temperature heaters.

- Heavy gauge galvanized housings from 14" to 28" (356 mm to 711 mm)
- Wheels from 10" to 20" (254 mm to 508 mm)
- 1 to 15 horsepower models
- Single and three-phase ODP motors

Behind the Scenes:

Chief Makes That: Featuring Axial Fans by Chief Agri

Scan the QR code to witness the manufacturing process in action.



HEATERS

Caldwell heaters are designed to work in combination with axial, centrifugal, or inline fans. Fueled by natural gas and liquid or vapor propane, Caldwell heaters are available in upstream and downstream models.

- Easy access service door and control enclosure
- Heavy gauge galvanized housings are built to last
- High and low temperature configurations
- Nine models of electric humidity controllers



Efficiency - Dependability

DUCTS

Caldwell offers a wide variety of grain conditioning ducts for commercial and farm use, including custom designs. Caldwell provides aeration installation layouts.



TRANSITIONS

Caldwell transitions have galvanized housings and feature an efficient design to reduce turbulence.

- Offer maximum airflow
- Shipped fully assembled for faster installation
- Form a tight, dependable seal

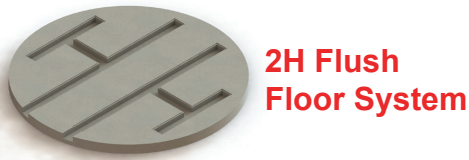


FLOORS

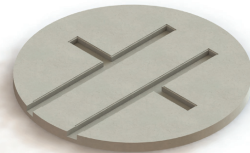


Caldwell Flush Floor Systems

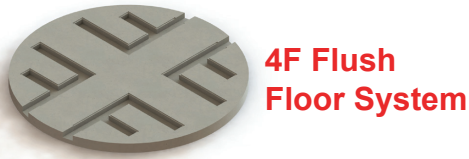
Caldwell Flush Floor Systems are custom designed for each specific application. Choose from a panel grate system, corrugated sheeting system, or channellock plank system in the configuration that fits your needs. Available in a variety of sizes up to 10' (3 m) wide, systems are perforated for unrestricted air flow. Caldwell will also design a custom fit to ensure proper air flow. Panel grates are available with I-beam supports (which incorporate a perforated web) for heavier loads. Flush Floor Systems are manufactured with modular components for ease of installation.



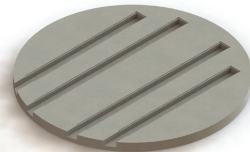
2H Flush Floor System



2T Flush Floor System



4F Flush Floor System



4I Flush Floor System

Explore More Options: Discover our Range of Flush Floor Layouts

Full Floor Systems

Caldwell channellock floor systems are manufactured to help maintain the optimum quality of your grain. All channellock floor planks are of galvanized steel and manufactured to exacting specifications to insure proper fit, structural integrity, and proper airflow.



Rigidity for the Long Haul!

Caldwell Floors are engineered to handle grain depths of up to 110' (33.52 M)!

Available floor perforation sizes per gauge:

20 gauge

- 0.094" (2.4 mm)
- 0.050" (1.3 mm)

18 gauge

- 0.094" (2.4 mm)
- 0.054" (1.4 mm)

16 gauge

- 0.094" (2.4 mm)



Floor supports are available in:

Airframe design

Channellock design

- 13" (33.02 cm) floor depth
- 17" (43.18 cm) floor depth
- 16 gauge galvanized material

CONVEYORS

Galvanized for superior corrosion resistance

Chief horizontal chain conveyors come standard with fully galvanized intermediate sections. It can be customized to your application.



Product Features:

- Horizontal and Incline Conveyors available.
- AR Liners in 10 ga, 7 ga, 1/4" and 3/8".
- High-strength Chains with welded attachments.
- HD UHMW CNC cut replaceable paddles.
- Class II Drives Standard; Class I & III available.
- Large variety of box sizes and chain speeds available.
- Intermediate seams have bolt connections with staggered bottoms to provide a secure joint without the need for welding. The result is a strong connection with superior corrosion resistance.
- Take-up system uses an easy to adjust threaded rod for reliable and accurate chain tensioning.
- Reversing conveyors are available.
- Idler return systems are used for smaller conveyors; rail returns are standard on 21" (53.34 cm) and wider conveyors.
- Options available for multiple discharge. Full line of inlets, and sensors.
- Legs and conveyors are also available in stainless steel.
- Capacities up to 40,000 bph (1016 MT/h).



Self-Cleaning Conveyor

Experience the efficiency of our Self-Cleaning Conveyor, meticulously crafted with specially designed formed pans to eliminate potential material buildup. The innovative paddles seamlessly sweep along the inclined surface, ensuring that no residue is left behind. This design is particularly beneficial for conveyors handling diverse commodities or feed products, providing reliable and continuous material flow to the discharge point.



Gentle Handling, Low Horsepower



Under Floor Conveyor

Engineered with exceptional strength to withstand high usage demands, our Under Floor Conveyors are available in both Horizontal and Horizontal Incline Models, offered in 17x09 and 21x09 configurations. Specifically designed to seamlessly integrate beneath a 17" floor support, these conveyors provide robust and reliable solutions for your material handling needs.

Chief Horizontal Chain Conveyor (CHCC)

Model W x H	Chain	Capacity	1 FPM (.005 M/S)	78 FPM (0.40 M/S)	98 FPM (0.50 M/S)	118 FPM (0.60 M/S)	138 FPM (0.70 M/S)	157 FPM (0.80 M/S)	177 FPM (0.90 M/S)
9 X 9	81X	CFH	17	1519	1924	2295	2667	3038	3443
		BPH	13	1181	1496	1785	2074	2363	2678
		MTPH	0.3	31	40	47	55	62	70
9 X 13	81X	CFH	39	2311	2928	3467	4083	4623	5239
		BPH	30	1798	2277	2697	3176	3596	4075
		MTPH	0.8	48	60	70	83	94	107
13 X 13	81X	CFH	56	3339	4229	5008	5898	6677	7568
		BPH	44	2620	3318	3929	4628	5239	5938
		MTPH	1	68	86	102	120	136	154
13 X 15	81X	CFH	40	4147	5264	6221	7178	8295	9252
		BPH	31	3254	4130	4881	5632	6508	7259
		MTPH	1	85	107	127	147	170	189
15 X 17	81X	CFH	133	5832	7157	8483	10073	11398	12989
		BPH	104	4588	5630	6673	7924	8967	10218
		MTPH	3	119	146	173	206	233	265
	WH124	CFH	131	5785	7100	8415	9993	11308	12623
		BPH	103	4551	5585	6620	7861	8895	9930
		MTPH	3	118	145	172	204	231	258
17 X 17	81X	CFH	150	6309	8111	9614	11416	12618	14420
		BPH	118	4973	6394	7578	8999	9946	11367
		MTPH	3	129	166	196	233	258	294
	WH124	CFH	149	6259	8047	9537	11325	11325	14306
		BPH	117	4933	6343	7517	8927	8927	11276
		MTPH	3	128	164	195	231	231	292
17 X 21	81X	CFH	244	8532	10726	12432	14626	16576	18526
		BPH	192	6725	8454	9799	11529	13066	14603
		MTPH	5	174	219	254	299	338	378
	WH124	CFH	249	8471	10963	12707	14949	16943	18936
		BPH	196	6677	8641	10016	11784	13355	14926
		MTPH	5	173	224	259	305	346	386



NOTE: Standard Left Hand (LH) projection on conveyors means from the inlet end facing the discharge end the drive arrangement will be on the left hand side.

CFH: Cubic Feet/Hour BPH: Bushel/Hour MTPH: Metric Ton/Hour
FPM: Feet/Minute M/S: Meters/Second



Chief Horizontal Chain Conveyor (CHCC) Continued...

Model W x H	Chain	Capacity	1 FPM (.005 M/S)	78 FPM (0.40 M/S)	98 FPM (0.50 M/S)	118 FPM (0.60 M/S)	138 FPM (0.70 M/S)	157 FPM (0.80 M/S)	177 FPM (0.90 M/S)
21 X 17	81X	CFH	186	7793	10020	11876	13731	15958	17813
		BPH	147	6160	7921	9387	10854	12614	14051
		MTPH	4	159	205	242	280	326	363
	WH124	CFH	184	7731	9940	11781	13622	15831	17672
		BPH	146	6111	7858	9313	10768	12514	13969
		MTPH	4	158	203	240	278	323	361
21 X 21	81X	CFH	301	10238	12647	15659	18068	20477	23488
		BPH	238	8093	9997	12378	14282	16186	18567
		MTPH	6	209	258	320	369	418	480
	WH124	CFH	308	10465	12927	15389	18467	20929	23391
		BPH	243	8272	10218	12165	14598	16544	18490
		MTPH	6	214	264	314	377	427	477
21 X 27	WH124	CFH	537	13974	17199	20424	24724	29023	32248
		BPH	425	11046	13595	16145	19543	22942	25491
		MTPH	11	285	351	417	505	592	658
	WH132	CFH	530	13781	18021	21201	24382	27562	30742
		BPH	419	10894	14245	16759	19273	21787	24301
		MTPH	10.8	281	368	433	487	563	627
27 X 21	WH124	CFH	396	13454	16620	19786	23347	26909	30075
		BPH	314	10664	13173	15682	18505	21328	23837
		MTPH	8	275	339	404	477	549	614
27 X 27	WH124	CFH	691	17967	22113	27641	31787	35934	40771
		BPH	548	14240	17527	21908	25194	28481	32315
		MTPH	14	367	452	564	649	733	832
	WH132	CFH	681	17718	21807	27259	31348	35437	40207
		BPH	540	14043	17284	21605	24846	28087	31868
		MTPH	14	362	445	556	640	723	821
33 X 33	WH132	CFH	1322	27760	34369	42301	47588	55520	62129
		BPH	1050	22040	27287	33584	37782	44079	49327
		MTPH	27	567	701	863	971	1133	1268

NOTE: Standard Left Hand (LH) projection on conveyors means from the inlet end facing the discharge end the drive arrangement will be on the left hand side.

CFH: Cubic Feet/Hour BPH: Bushel/Hour MTPH: Metric Ton/Hour
FPM: Feet/Minute M/S: Meters/Second

BPH based on #2 corn @ 56 LBS/BU

MTPH based on 31 LBS/CUBIC FT MATERIAL



Chief Incline Pit Chain Conveyor Capacities

Model W x H	Chain	Capacity	1 FPM (.005 M/S)	78 FPM (0.40 M/S)	98 FPM (0.50 M/S)	118 FPM (0.60 M/S)	138 FPM (0.70 M/S)	157 FPM (0.80 M/S)	177 FPM (0.90 M/S)
9 x 9	81X	CFH	8	844	1055	1266	1477	1688	1899
		BPH	6	675	844	1013	1182	1350	1519
		MTPH	0	17.2	22	26	30	34	39
9 x 13	81X	CFH	20	1220	1545	1830	2115	2440	2765
		BPH	16	976	1236	1464	1692	1952	2212
		MTPH	0	25	32	37	43	50	56
13 x 15	81X	CFH	37	1941	2426	2912	3397	3882	4368
		BPH	30	1553	1941	2329	2718	3106	3494
		MTPH	1	40	50	60	70	79	89
15 x 17	81X	CFH	58	3012	3765	4517	5270	6023	6776
		BPH	46	2409	3012	3614	4216	4819	5421
		MTPH	1	62	77	92	108	123	138
17 x 17	81X	CFH	66	3420	4275	5130	5985	6840	7695
		BPH	53	2736	3420	4104	4788	5472	6156
		MTPH	1	70	87	105	122	140	157
21 x 21	81X	CFH	101	5234	6543	7851	9160	10469	11777
		BPH	81	4187	5234	6281	7328	8375	9422
		MTPH	2	107	134	160	187	214	240
	WH124	CFH	99	5159	6449	7738	9028	10417	11608
		BPH	79	4127	5159	6191	7223	8334	9286
		MTPH	2	105	132	158	184	213	237
27 x 21	81X	CFH	130	6748	8435	10122	11809	13496	15183
		BPH	104	5398	6748	8097	9447	10797	12146
		MTPH	3	138	172	207	241	275	310
	WH124	CFH	128	6651	8313	10104	11767	13429	15092
		BPH	102	5321	6651	8083	9413	10743	12704
		MTPH	3	136	170	206	240	274	308

BPH based on #2 corn @ 56 LBS/BU

MTPH based on 45 LBS/CUBIC FT MATERIAL

Chief Incline Pit Chain Conveyor Capacities Continued...

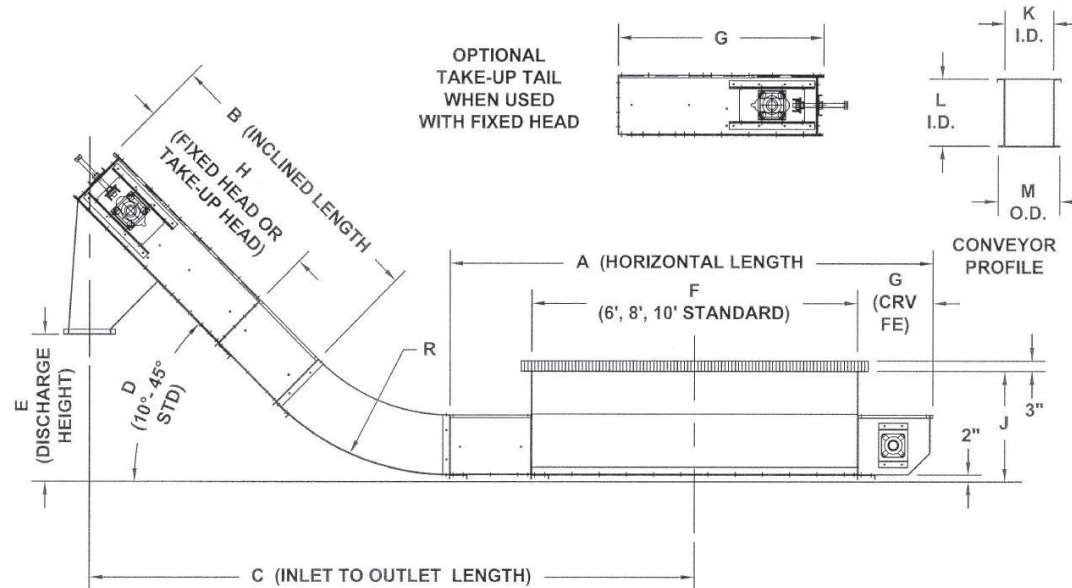
Model W x H	Chain	Capacity	1 FPM (.005 M/S)	78 FPM (0.40 M/S)	98 FPM (0.50 M/S)	118 FPM (0.60 M/S)	138 FPM (0.70 M/S)	157 FPM (0.80 M/S)	177 FPM (0.90 M/S)
27 x 27	WH124	CFH	257	8754	10814	13131	15191	17353	17302
		BPH	206	7003	8651	10505	12153	13883	13842
		MTPH	5	179	221	268	310	354	353
	WH132	CFH	278	8623	10793	13073	15243	17413	19638
		BPH	223	6898	8634	10459	12194	13930	15710
		MTPH	6	176	220	267	311	355	401
33 x 33	WH132	CFH	402	12476	15616	18755	21894	25033	28173
		BPH	322	9981	12493	15004	17515	20027	22538
		MTPH	8.2	255	319	383	447	511	575

BPH based on #2 corn @ 56 LBS/BU

MTPH based on 45 LBS/CUBIC FT MATERIAL

NOTE: Standard Left Hand (LH) projection on conveyors means from the inlet end facing the discharge end the drive arrangement will be on the left hand side.

CFH: Cubic Feet/Hour BPH: Bushel/Hour MTPH: Metric Ton/Hour FPM: Feet/Minute M/S: Meters/Second



When requesting quotation, provide dimensions for areas A through F pictured above.



Worldwide support

Taking care of our customers is a top priority at Chief Agri. We engineer lasting relationships by offering dependable service and products built to last. But don't just take our word for it! Here's what a few of our many satisfied customers have to say:

"What impresses me most about Chief is their commitment to building relationships with their customers and getting to know their needs firsthand. It's this level of dedication that truly sets them apart and makes them an invaluable partner."

- Blue River Sales & Service

"Chief is a partner who provides support in strong economic times as well as in challenging situations. Therefore, for us, Chief is the go-to choice."

- MEPROSA

ELEVATORS

Heavy Duty Commercial Elevator Boot is Built to Last!

Standard for 36" (91.44 cm) pulleys and larger.

Available as an option on other models.

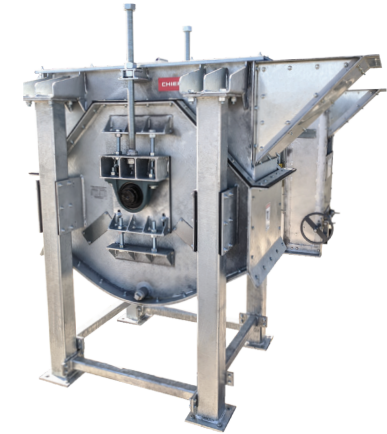
- Chief's heavy-duty boot is ideal for extra heavy operations!
For use in the largest of commercial grain handling facilities, with features to meet your demands.
- Welded and hot-dipped galvanized frame is constructed with structural angle support and 1/4" plates.
- Rack and pinion clean-out doors provide easier access for cleaning the boot.
- Side shovel pocket makes it easy to feed loose grain that may have spilled around the boot area.



Standard Boot Sections offer Rock Solid Support!

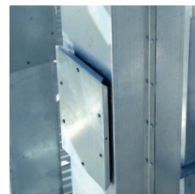
Standard for 30" (76.20 cm) pulleys and smaller

- Inspection doors on each side of the boot section provide access to the heavy-duty drum or self-cleaning winged pulley.
- 45° clean-out sections on the end panels of each boot section are standard.
- Take-up screws are standard.
- All Boot shafts are drilled and tapped for an optional speed monitor.
- Clean-out sections are standard on each end of the boot.
- Factory precut openings for rub bar monitors.



Elevator Trunk Sections Install Easily!

- Ceramic and urethane lining optional, explosion vents are optional on 20'-0" (6.10 m) centers in the up and down leg trunking.
- Inspection sections have heavy-duty welded frames with removable panels for easy belt and bucket maintenance.
- Polyethylene buckets are standard. Steel, stainless steel, urethane, or nylon buckets are optional.
- Urethane-lined discharge hoppers are available for smaller models and standard on larger models.



Explosion Venting



Polyethylene Buckets



Self Cleaning Boot

- Available in Hot Dip Galvanized Finish Or Stainless Steel
- Available in Standard Drum Or Wing Pulley Configurations
- Available 10" - 30" Pulley Diameter.

Full Capacity - Delivered!

NOTE: Bucket Elevators have a standard Left Hand (LH) projection which means from the motor mount looking towards the discharge of the elevator the drive arrangement will be on the left hand side.

Pulley Diameter 10" to 42"

Bushel Capacity	Pulley Diameter	PLASTIC CC		Pulley RPM	BELT		Discharge
		Bucket Size	Bucket Space		Belt Speed (FPM)	Belt Width	
500 BPH	10"	6 X 4	9"	109	314	7"	6" RD.
12.7 MTPH	-254	(152.4 X 101.6)	-228.6	109	(1.59 M/S)	-177.8	-152.4
750 BPH	10"	6 X 4	6"	109	314	7"	6" RD.
19.0 MTPH	-254	(152.4 X 101.6)	-152.4	109	(1.59 M/S)	-177.8	-152.4
1000 BPH	10"	6 X 4 LP	4.5"	109	314	7"	6" RD.
25.4 MTPH	-254	(152.4 X 101.6)	-114.3	125	(1.59 M/S)	-177.8	-152.4
1000 BPH	16"	9 X 6	20"	93	414	10"	6" RD.
25.4 MTPH	-406.4	(228.6 X 152.4)	-508	93	(2.1 M/S)	-254	-152.4
1500 BPH	16"	9 X 6	14"	93	414	10"	6" RD.
38.1 MTPH	-406.4	(228.6 X 152.4)	-355.6	93	(2.1 M/S)	-254	-152.4
2000 BPH	16"	9 X 6	10"	93	414	10"	8" RD.
50.8 MTPH	-406.4	(228.6 X 152.4)	-254	93	(2.1 M/S)	-254	-203.2
2500 BPH	16"	9 X 6	8"	93	414	10"	8" RD.
63.5 MTPH	-406.4	(228.6 X 152.4)	-203.2	93	(2.1 M/S)	-254	-203.2
3000 BPH	16"	9 X 6	7"	93	414	10"	8" RD.
76.2 MTPH	-406.4	(228.6 X 152.4)	-177.8	93	(2.1 M/S)	-254	-203.2
3000 BPH	24"	12 X 6	10.5"	73	478	13"	8" RD.
76.2 MTPH	-406.4	(304.8 X 152.4)	-266.7	73	(2.43 M/S)	-330.2	-203.2
3500 BPH	24"	12 X 6	9"	73	478	13"	10" RD.
88.9 MTPH	-406.4	(304.8 X 152.4)	-228.6	73	(2.43 M/S)	-330.2	-254
4000 BPH	24"	12 X 6	8"	73	478	13"	10" RD.
101.6 MTPH	-406.4	(304.8 X 152.4)	-203.2	73	(2.43 M/S)	-330.2	-254

Pulley Diameter 10" to 42" continued...

Bushel Capacity	Pulley Diameter	PLASTIC CC		Pulley RPM	BELT		Discharge
		Bucket Size	Bucket Space		Belt Speed (FPM)	Belt Width	
4000 BPH	30"	12 X 6	9"	67	544	13"	10" RD.
101.6 MTPH	-762	(304.8 X 152.4)	-228.6	67	(2.76 M/S)	-330.2	-254
5000 BPH	30"	12 X 6 LP	7"	67	544	13"	10" RD.
127.0 MTPH	-762	(304.8 X 152.4)	-177.8	67	(2.76 M/S)	-330.2	-254
6000 BPH	30"	12 X 6 LP	6"	67	544	13"	12" RD.
152.4 MTPH	-762	(304.8 X 152.4)	-152.4	67	(2.76 M/S)	-330.2	-304.8
5000 BPH	36"	12 X 7	12"	65	630	13"	12" RD.
127.0 MTPH	-762	(304.8 X 177.8)	-304.8	65	(3.20 M/S)	-330.2	-304.8
6000 BPH	36"	12 X 7	10"	65	630	13"	12" RD.
152.4 MTPH	-762	(304.8 X 177.8)	-254	65	(3.20 M/S)	-330.2	-304.8
7000 BPH	36" W	16 X 7	12"	65	630	17"	12" RD.
177.8 MTPH	-762	(304.8 X 177.8)	-304.8	65	(3.20 M/S)	-431.8	-304.8
8000 BPH	36" W	16 X 7	10.5"	65	630	17"	14" RD.
203.2 MTPH	-762	(304.8 X 177.8)	-266.7	65	(3.20 M/S)	-431.8	-355.6
9000 BPH	36"W	16 X 7	9.5"	65	630	17"	16" RD.
228.6 MTPH	-762	(304.8 X 177.8)	-241.3	65	(3.20 M/S)	-431.8	-406.4
8000 BPH	42"	16 X 8	14.5"	58	653	17"	14" RD.
203.2 MTPH	-1066.8	(304.8 X 203.2)	-368.3	58	(3.32 M/S)	-431.8	-355.6
9000 BPH	42"	16 X 8	13"	58	653	17"	16" RD.
228.6 MTPH	-1066.8	(304.8 X 203.2)	-330.2	58	(3.32 M/S)	-431.8	-406.4
10,000 BPH	42"	16 X 8	11.5"	58	653	17"	16" RD.
254.0 MTPH	-1066.8	(304.8 X 203.2)	-292.1	58	(3.32 M/S)	-431.8	-406.4
12,000 BPH	42"	16 X 8	10"	58	653	17"	18" RD.

Pulley Diameter 48"

Bushel Capacity	Pulley Diameter	PLASTIC CC		BELT			Discharge
		Bucket Size	Bucket Space	Pulley RPM	Belt Speed (FPM)	Belt Width	
20,000 BPH	48"	2@16 X 8	13"	56	667	22"	22" RD.
550 MTPH	-1219.2	(508.0 X 203.2)	-330.2	56	(3.39 M/S)	-558.8	-457.2
25,000 BPH	48"	2@16 X 8	10.5"	56	704	34"	24" SQ.
681 MTPH	-1219.2	2@(406.4 X 203.2)	-266.7	56	(3.58 M/S)	-863.6	-609.6
30,000 BPH	48"	2@16 X 8	8.5"	56	667	34"	24" SQ.
833 MTPH	-1219.2	2@(406.4 X 254.0)	-215.9	56	(3.39 M/S)	-863.6	-609.6
40,00 BPH	48"	3@16 X 8	9"	56	690	57"	30" SQ.
1117 MTPH	-1371.6	3@(406.4 X 254.0)	-228.6	56	(3.50 M/S)	-1447.8	-762





CATWALKS & TOWERS

Long Life, Professionally Engineered
Project Specific Design

Your Catwalks and Tower Systems are manufactured by Chief Agri, whose dedication to customer service and reputation for manufacturing quality grain storage and handling systems is recognized worldwide.

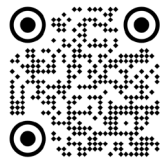
Here are a few of the reasons why Chief Catwalks and Tower Systems are right for your grain handling system:

- All components are hot-dipped galvanized
- Fully bolted assembly
- Square tubing design assures optimal strength
- Multiple catwalk models and tower widths to accommodate your grain system needs
- Available with 24" Grip Strut walkways or full-floor options





A division of CHIEF INDUSTRIES, INC.
4400 East 39th Street
P.O. Box 848
Kearney, NE 68848-0848 USA
Phone +1 (800) 359-7600
agri.chiefind.com



**GET A QUOTE
TODAY!**