



Bulletin	856
Effective	11-1-83
Page 1 of 3	

PACKING LIST AND ASSEMBLY INSTRUCTIONS
FOR THE
CALDWELL BALANCED BIN VENT
CBBV-16 & CBBV-19

A) Parts required for both CBBV-16 or CBBV-19 vent:

<u>Quantity</u>	<u>Part Number</u>	<u>Description</u>
1	707471	Bolt Package Assembly
consists of 4	708404	3/8" Washer Neoprene
	4 708172	3/8" Hex Nut
	4 707943	5/16" x 3/4" Bolt
	4 708263	5/16" Flat Washer
	4 708164	5/16" Hex Nut
	2 708156	1/4" Hex Nut
	2 708388	1/4" Washer Neoprene
1	707505	Lid Hoist Assembly
consists of 1	745976	Lid Hoist
	1 715375	Rope 42' Long
	1 708578	1/4" x 7/8" Eyebolt

B) Parts required for CBBV-16 vent only:

<u>Quantity</u>	<u>Part Number</u>	<u>Description</u>
1	747071	16" Angle Ring Painted
1	707422	16" Cover
1	707430	16" Angle Ring Hinged
1	708552	Cotter Pin 1/4" x 4"

C) Parts required for CBBV-19 vent only:

<u>Quantity</u>	<u>Part Number</u>	<u>Description</u>
1	747089	19" Angle Ring Painted
1	707489	19" Cover
1	707497	19" Angle Ring Hinged
1	708552	Cotter Pin 1/4" x 4"



Bulletin	856
Effective	11-1-83
Page 2 of 3	

INSTALLATION INSTRUCTIONS

1. The Caldwell Balanced Bin Vent is shipped six per carton. The parts needed for one individual vent are listed on page 1. Check all items received against the packing list for the bin vent size being installed.
2. Location of Mounting Hole:
 - A) CBBV-16 Bin Vent
 - a) To locate bin vent, measure up 15" from the center bolt in the roof sheet (see Figure 1). Center punch this point.
 - b) Using the center punch as the center point, scribe a 16" diameter circle. Do Not Cut Hole Yet.
 - c) Using the individual angle ring, temporarily locate the lift hoist in the holes spaced at 10-3/4" apart. Remove the lift hoist and position the angle ring over the scribed hole with the angle ring holes spaced at 10-3/4" at the bottom, center the angle ring on the scribed hole and center punch the six mounting holes. Place the angle ring to the side for now and drill the six 3/8" holes and cut out the scribed circle in the roof sheet.
 - B) CBBV-19 Bin Vent
 - a) To locate the bin vent, measure up 16-1/2" from the center bolt in the roof sheet. (See Figure 2). Center punch this point.
 - b) Using the center punch as the center point, scribe a 18-9/16" diameter circle. Do Not Cut Hole Yet.
 - c) Using the individual angle ring, center it over the scribed circle. Locate the angle ring so that the angle ring holes are approximately at 30° to the center line of the roof sheet. Now using the angle ring as a guide, center punch the six mounting holes. Place angle ring to the side for now and drill the six 3/8" holes and cut out the scribed circle in the roof sheet.
3. Place individual angle ring on inside of bin roof sheet. Locate lid assembly on outside of bin roof sheet with lid hinge pointed to roof peak. (See Figure 3). Secure lid assembly and individual angle ring to roof sheet using four 5/16" x 3/4" bolts with attached neoprene washers, 5/16" flat washer and 5/16" hex nut. Force small amount of caulking compound between lid assembly and roof sheet.
4. Screw 1/4" hex nut up on eyebolt. Slip 1/4" neoprene washer up against nut. Place eyebolt in 1/4" diameter hole in lid. Use 1/4" neoprene washer and 1/4" hex nut and tighten down eyebolt against lid.
5. Screw one 3/8" hex nut up on each side of lid hoist. Slip 3/8" neoprene washers up against nuts. Now slip lid hoist into remaining two holes in angle ring and roof sheet. (See Figure 3). Position 3/8" neoprene washer and 3/8" nut on each side of lid hoist and tighter.
6. Remove cotter key in bin vent lid assembly and remove lid. Using a ball peen hammer, peen up the roof sheet inside of angle ring. This will keep moisture from seeping in.
7. Place bin vent lid back in place. Insert cotter key and flare end to keep in place.
8. Rope tie off bracket is to be centered with lid hoist. It is to bolt to the horizontal bolting between the second and third ring of the bin. Secure rope to tie off by wrapping it around the bracket. (See Figure 4).

CBBV-16

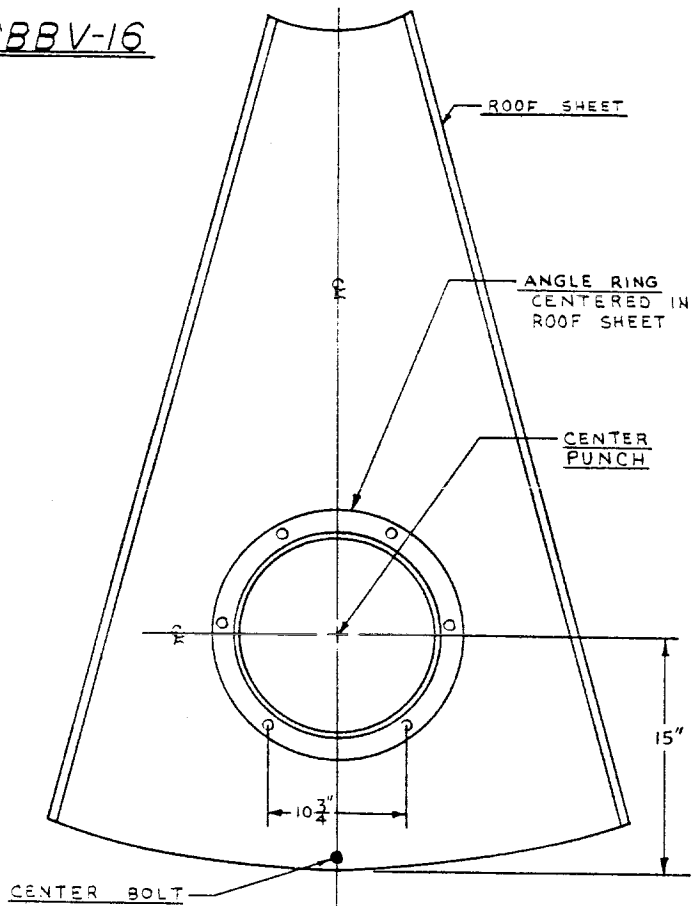


FIGURE 1

CBBV-19

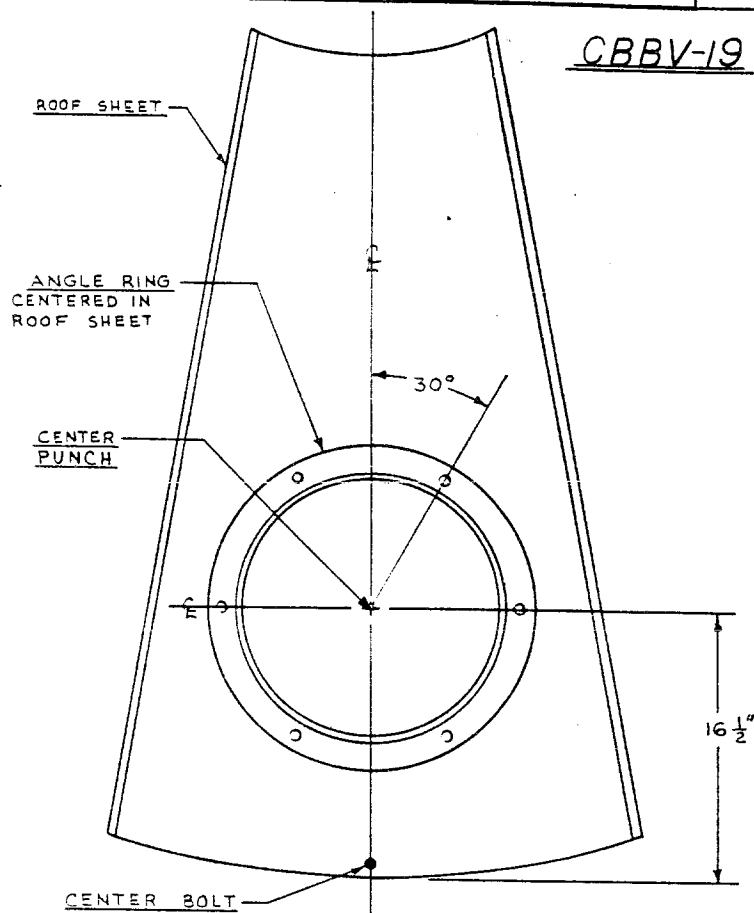


FIGURE 2

ROOF SHEET

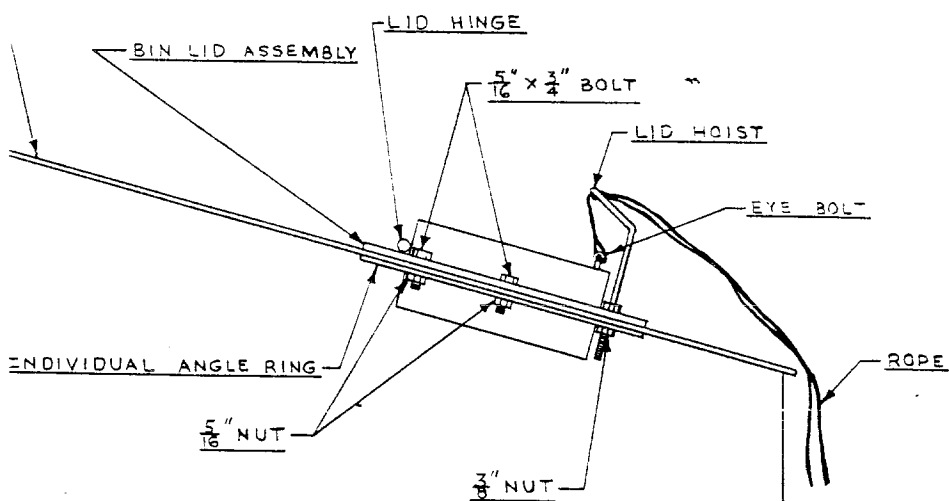


FIGURE 3

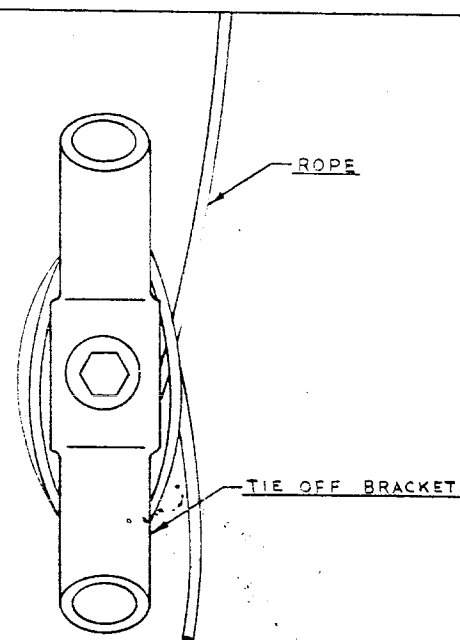


FIGURE 4