

ITEM	QTY	PART NO.	DESCRIPTION
1	1	172777	BULLETIN 1159 H2025 RCT BRNR C
2	1	179311	CONDUIT HANGER 1" PLTD. W/BOLT
3	1	192399	BURNER WLDM H2025 GLV RETRO
4	1	275222	BRACKET FLMPRB H1015/2025 SLTD

INSTALLATION OF BURNER

- 1.) DISCONNECT THE LEAD WIRES, FLAME PROBE, AND SPARK PLUG FROM THE EXISTING BURNER. BREAK THE PLUMBING LINE AT THE UNION AND REMOVE THE PLUMBING FROM THE BURNER. DISASSEMBLE ANCHORING NUTS AND REMOVE THE BURNER FROM THE HOUSING.
- 2.) POSITION THE NEW BURNER (ITEM #3) IN PLACE AND MAKE THE PLUMBING CONNECTIONS. USE THREAD SEALANT AND MAKE SURE THE PLUMBING CONNECTIONS ARE GAS TIGHT.
- 3.) SECURE THE BURNER TO THE HOUSING WITH THE 3/8-16 FASTENERS.

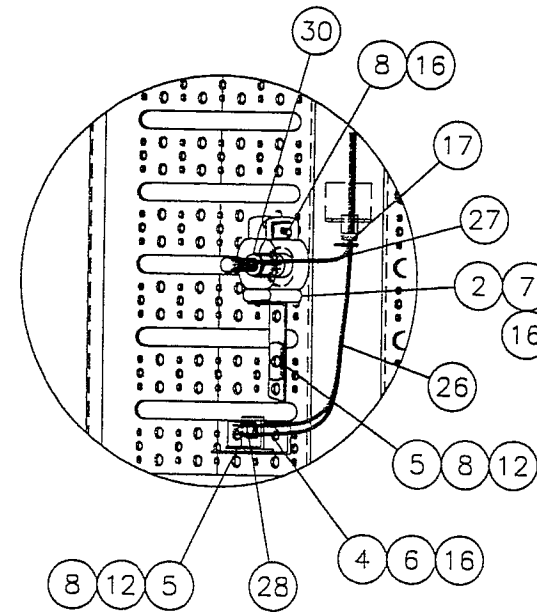
ITEM	QTY	PART NO.	DESCRIPTION
5	2	702548	BRACKET FLAMEPRBE ADJSTBL WLDM
6	2	707844	SCREW MCH .25-20X.5"TRS SLT PT
7	2	707893	CS 1/4-20X1 HEX HD GRADE 5 PTD
8	2	707935	CS 5/16-18X.75 HEX HD GR5 PLTD
9	2	708115	CB 3/8-16X5 FULL THREAD PLTD
10	4	708172	NUT 3/8-16 HEX PLATED
11	4	708271	WASHER FLAT 3/8" PLTD
12	2	708313	WASHER LOCK 5/16"RGLR STL PLTD
13	4	708321	WASHER LOCK 3/8" RGLR STL PLTD
14	1	708628	BAG COTTON WHT 8X10 LOGO TIES
15	1	708644	BAG PLASTIC 8X9X.002
16	4	710756	NUT 1/4-20 HEX WHIZ FLNGE PLTD
17	1	712000	BUSHING UNIV. .875MOUNTING DIA
18	1	712901	UNION 3/4NPT SCH 40 BLK ST
19	1	713180	ELBOW REDUCER 3/4T01/2X90 BLK
20	1	714311	NIPPLE 3/4NPT X 2" SCH 40 BLK
21	1	714337	NIPPLE 3/4NPT X2.5" SCH 40 BLK
22	1	714881	ORIFICE 1/2NPTX1/4IN KNURLD HD
23	2	719054	ELBOW 3/4NPT X 90DEG SCH40 BLK
24	1	720490	ORIFICE HOLDER 3/4"X2"
25	3	721837	CABLE TIE PLASTIC STD 3.75LONG
26	2	730531	WIRE ASSY FLM PR 1CON 42"W/2QD
27	1	745828	WIRE ASSY SPK PLUG 42"W/2RING
28	1	749812	FLAMEPROBE OPEN ON RISE 200DEG
29	2	751289	CS 3/8-16X.75 HEX HD GR5 PLTD
30	1	851402	SPARK PLUG 7/8-18 THD

SPARK PLUG INSTALLATION

- 1.) USING A PAIR OF PLIERS, DEFORM THE CONDUIT HANGER SO IT FITS SNUGLY OVER THE SPARK PLUG.
- 2.) BOLT THE CONDUIT HANGER TO THE LONG LEG OF THE FLAME PROBE BRACKET USING A 1/4" NUT & BOLT. (THE BOLT HEAD NEEDS TO BE ON THE CONDUIT HANGER AND THE NUT ON THE FLAME PROBE SIDE.)
- 3.) BOLT THE SHORT LEG OF THE FLAME PROBE BRACKET TO THE BURNER SHIELD, USING AN EXISTING HOLE IN THE BURNER SHIELD WITH A 5/16" NUT & BOLT.
- 4.) CLAMP THE CONDUIT CLAMP AROUND THE SPARK PLUG. THE PLUG SHOULD BE LOCATED SO THE HEX PORTION OF THE SPARK PLUG IS HELD BY THE CONDUIT CLAMP. TIGHTEN THE BOLT AND NUT PROVIDED WITH THE CONDUIT CLAMP TO SECURE THE SPARK PLUG.
- 5.) ATTACH THE IGNITION WIRE TO THE SPARK PLUG USING THE NEW IGNITION WIRE (#27) THAT WAS SENT WITH THE KIT.
- 6.) POSITION THE SPARK PLUG SO IT IS OVER THE GAS EXIT HOLES, APPROXIMATELY 1/4" - 1/2" AWAY.
- 7.) MAKE SURE THE SPARK PLUG ELECTRODE IS NOT TOUCHING THE BURNER SHIELD.

FLAME PROBE INSTALLATION

- 1.) INSTALL FLAME PROBE BRACKET (#4) TO BURNER SHIELD USING (2) 1/4" SCREWS AND 1/4" NUTS
- 2.) ATTACH THE FLAME PROBE ADJUSTABLE BRACKET TO THE FLAME PROBE BRACKET USING A 5/16" BOLT AND NUT AND LOCKWASHER.
- 3.) INSTALL FLAME PROBE INTO ADJUSTABLE BRACKET AND ATTACH THE NEW FLAME PROBE WIRES



DETAIL A-A
SCALE:NONE

NOTE:
1.) USE THE SUPPLIED 7",5",3" OR 2" NIPPLE DEPENDING ON YOUR APPLICATION
2.) MOUNTING HOLES FOR BURNER WILL NEED TO BE DRILLED.

REVISIONS	DATE	ERO NO.
TOLERANCES UNLESS OTHERWISE SPECIFIED FRACTIONS +- 1/32 DECIMALS +- .031 ANGLES +- 1/4		



THIS DRAWING AND ALL INFORMATION THEREON IS THE PROPERTY OF CHIEF AGR/INDUSTRIAL, Kearney, Nebraska
IT IS LOANED CONFIDENTIALLY AND MUST NOT BE USED IN ANY WAY DETRIMENTAL TO CHIEF INDUSTRIES INC.

AUTHORIZED		
BY	DATE	
DRAWN DLR	9-22-99	
CHECKED		
APPROVED		

ALL DIMENSIONS ARE IN INCHES WITH METRIC EQUIVALENTS IN BRACKETS []		MIN. MAT'L GA.	FIN. WT.
PART NAME BULLETIN 1159 H2025 RECT BRNR CONVERSION			
MATERIAL (FOR KIT #419564) ASSEMBLY INSTALLATION INSTRUCTIONS			
SIZE B	SCALE 3/32"=1"	PART NO. (C910) 172777	