

Bulletin	1077
Effective	7/30/80
Page 1 of 2	

INSTRUCTIONS FOR INSTALLATION OF AIR SWITCH STATIC PRESSURE PROBE

If heater is used on centrifugal fans, the air pressure switch needs modification kit #751032 to operate correctly. This is due to the negative static pressure generated by the centrifugal fan. Follow directions below for installation.

Step 1. Remove terminal block by unscrewing two large nuts on bottom of box.

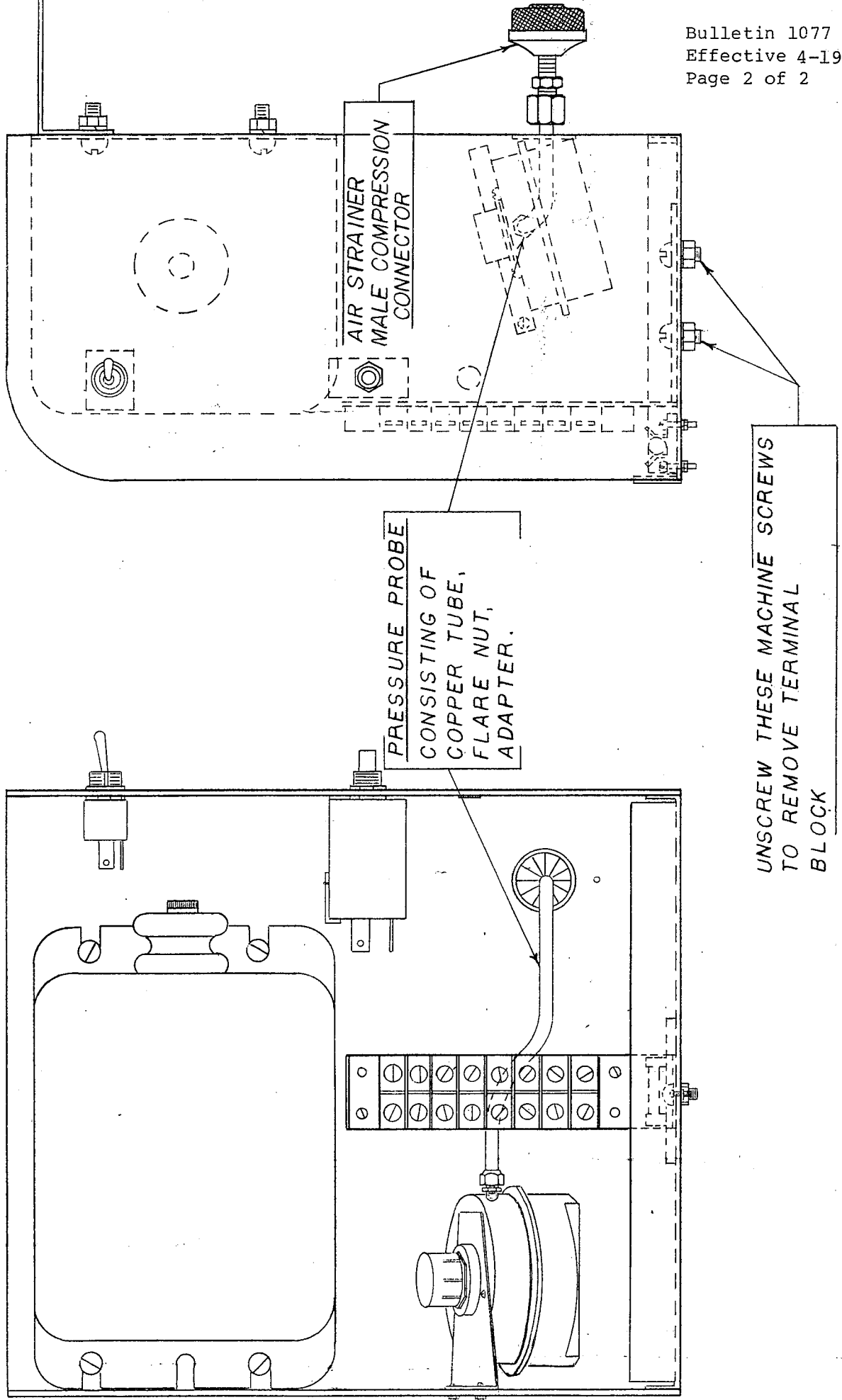
Step 2. Install brass adaptor into air switch.

Step 3. Push long end of copper tube through universal bushing on back of control box; and tighten flare nut securely on adaptor. (See illustration on page 2 of 2). Check to see that end of tube in housing is perpendicular to air flow, bend if necessary.

Step 4. Reinstall the terminal block.

Step 5. Reset air pressure switch by first removing red protective cap on top of air switch, then loosen lock nut on tension adjuster. Turn tension adjuster counterclockwise two turns, retighten lock nut, and replace protective cap.

AIR SWITCH
STATIC PRESSURE
PROBE
INSTALLATION



PRESSURE PROBE
CONSISTING OF
COPPER TUBE,
FLARE NUT,
ADAPTER.

AIR STRAINER
MALE COMPRESSION
CONNECTOR

UNSCREW THESE MACHINE SCREWS
TO REMOVE TERMINAL
BLOCK

