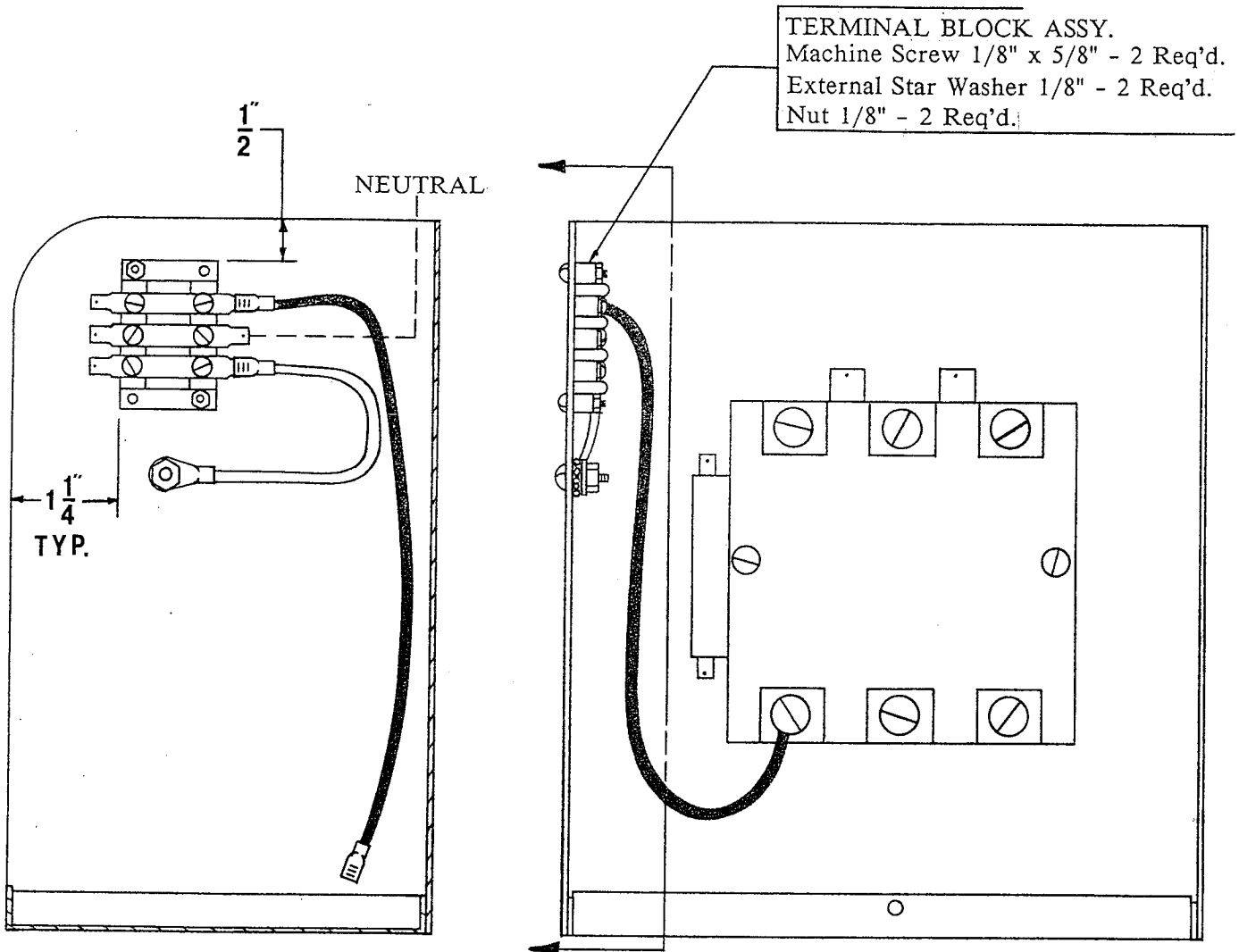


PART NO.	703793
BULLETIN	950
EFFECTIVE	4-1-87

Terminal Block Kit Installation Instructions



- I. A pair of 5/32" diameter holes are required to mount the terminal block. They are supplied on most units. If the holes are not supplied on your unit, field drill the 2 holes as shown.
- II. Wire the Black wire to terminal T1 on the Contactor as shown.
- III. Wire the Green wire to the Ground Terminal as shown.
- IV. The Neutral is supplied by the electrician and is field installed.



A DIVISION OF CHIEF INDUSTRIES, INC.

MANUFACTURING COMPANY

Post Office Box 338
Kearney, Nebraska 68848

Phone
1-800-228-8833
In Nebraska Call 1-308-237-3186