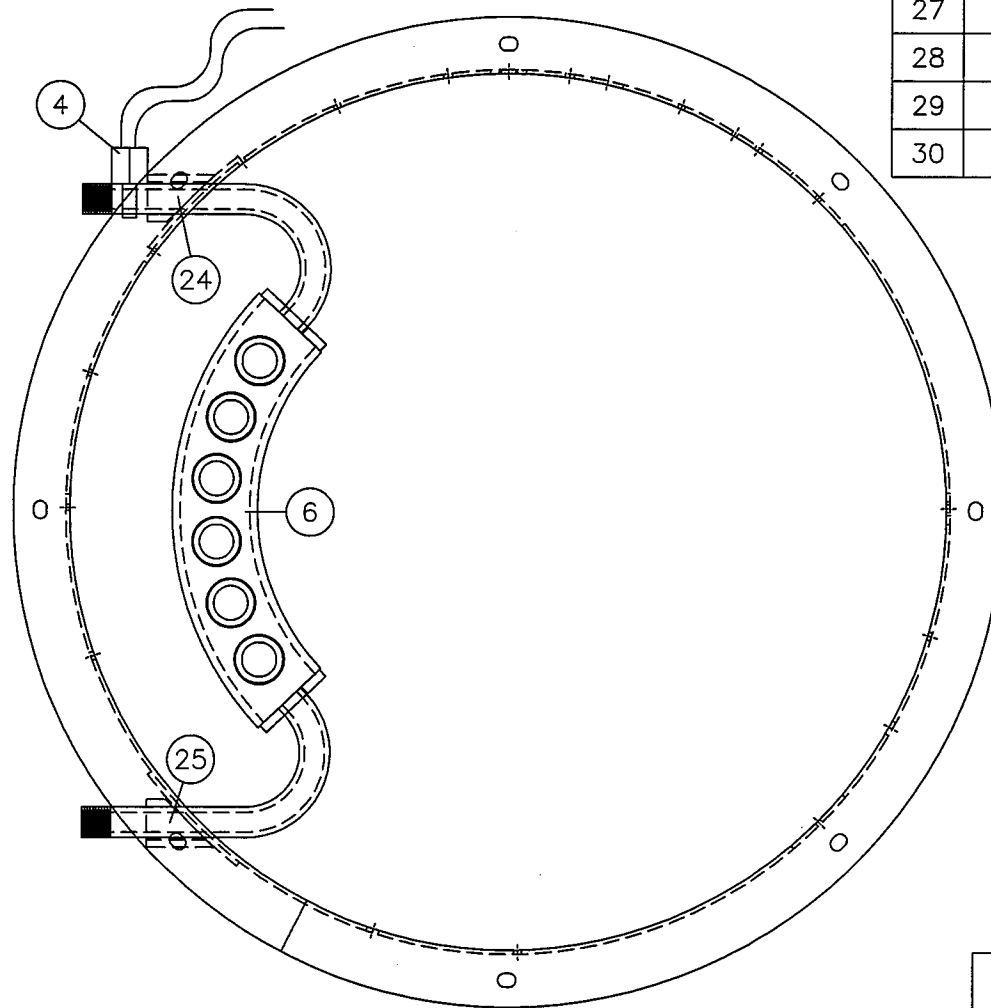
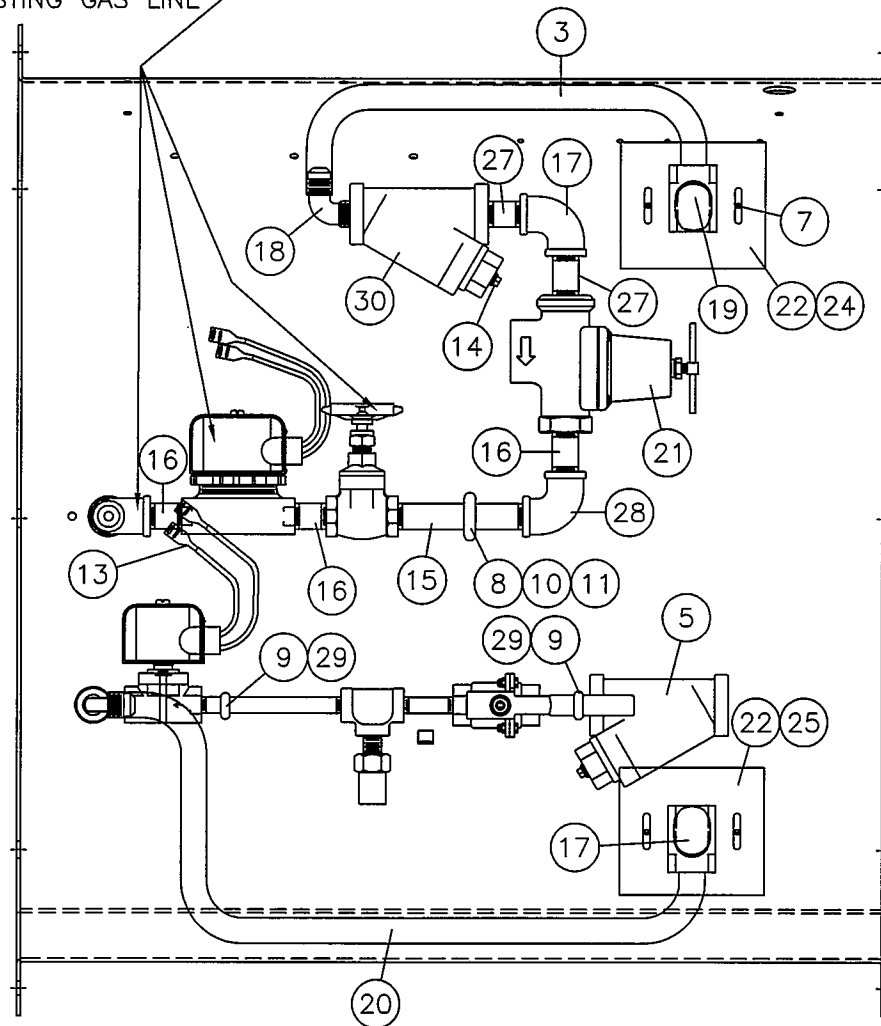


ITEM	QTY	PART NO.	DESCRIPTION	ITEM	QTY	PART NO.	DESCRIPTION	ITEM	QTY	PART NO.	DESCRIPTION
1	1	102263	BULLETIN 1172 VAPORIZER INST.	9	2	708313	WASHER LOCK 5/16"RGLR STL PLTD	18	1	714261	ELBOW BRASS 1/2X90 MALE
2	1	149745	BAG POLY-MESH 12IN X 18IN	10	1	708321	WASHER LOCK 3/8" RGLR STL PLTD	19	1	714451	ELBOW FEMALE 1/2X1/2NPT BRASS
3	1	155820	HOSE 1/2" 8LPG-8FSX-8FSX-24"	11	1	708602	EYEBOLT 3/8-16X2-1/2 7/8 EYE	20	1	715276	HOSE ASSY 3/8LPG 17"OA LENGTH
4	1	157200	THERMO VAPOR OPEN 160 37TC31	12	1	708859	SERIAL NUMBER PLATE (DOM)	21	1	721563	REG PRPN 1/2NPT E75P 0-20#
5	1	282293	PLUMBING ASSY H24/28LIQ LN GLV	13	2	711812	TERM QD 1/4" FEML 16-14 BAR.IN	22	2	735894	SET SCREW SQ HD 1/4X1/2 PLTD
6	1	702035	VAPORIZER WLDM H24/H28-LPGE	14	1	712927	PIPE PLUG 1/4 BLK STD	23	1	736587	CARTON MOD VALVE 23X10.5X4-3/4
7	4	708107	SMS SELF DRILL #12X3/4 TK3 HEX	15	1	713313	NIPPLE 1/2NPT X5" SCH 40 BLK	24	1	755777	BRACKET VAPRZ HG24 TOP GALVNZD
8	1	708172	NUT 3/8-16 HEX PLATED	16	3	714147	NIPPLE 1/2NPT X2" SCH 40 BLK	25	1	755785	BRACKET VAPRZ HG24 BTTM GLVNZD
				17	2	714246	ELBOW 1/2NPT X90DEG SCH 80 BLK	26	1	780189	WARRANTY REGISTRATION CARD GC
								27	2	784322	NIPPLE 1/2NPT X2" SCH 80 BLK
								28	1	785956	ELBOW 1/2NPT X 90 BLACK STD
								29	2	820696	NUT 5/16-18 HEX GR5 JS500 PLTD
								30	1	851626	Y LINE STRAINER 1/2NPT

THESE PARTS FROM EXISTING GAS LINE



ALL DIMENSIONS ARE IN INCHES WITH METRIC EQUIVALENTS IN BRACKETS []	MIN. MAT'L GA.	FIN. WT.
--	----------------	----------

C									
B									
A									
ERO NO.		DATE		TOLERANCES UNLESS OTHERWISE SPECIFIED FRACTIONS +- 1/32 DECIMALS +- .031 ANGLES +- 1/4		AUTHORIZED BY DATE		PART NAME	
						DRAWN ELB 8-16-99		BULLETIN 1172 VAPORIZER INST.	
						CHECKED BDH 8-16-99		MATERIAL	
						APPROVED BDH 8-16-99		ASSEMBLY	
				THIS DRAWING AND ALL INFORMATION THEREON IS THE PROPERTY OF CALDWELL MANUFACTURING CO., Kearney, Nebraska IT IS LOANED CONFIDENTIALLY AND MUST NOT BE USED IN ANY WAY DETRIMENTAL TO CALDWELL MANUFACTURING COMPANY A DIVISION OF CHIEF INDUSTRIES, INC.		SIZE		PART NO.	
						B		(C910) 102263	
						SCALE			
						3/16"=1"			