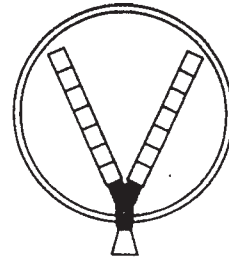


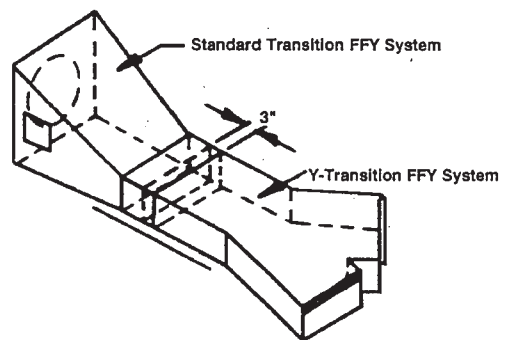
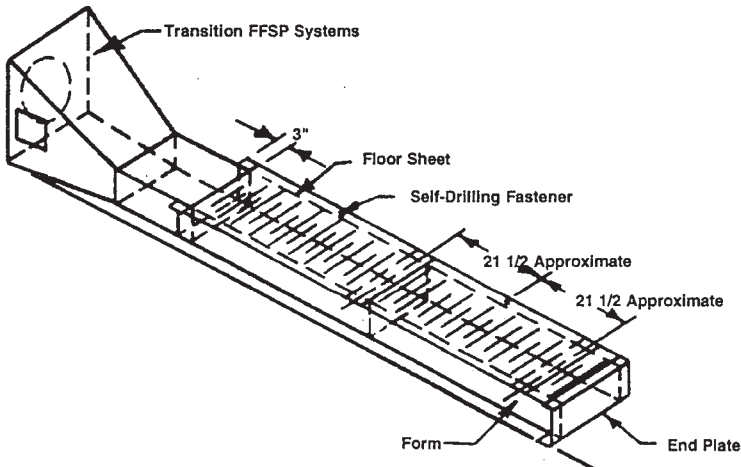


Flush Floor Aeration Systems Components



Listed are the components and quantity needed for each system.

Model Number	Part Number	Description	Flush Floor Model Number									
			FFY-18	FFY-21	FFY-24	FFY-27	FFSP-27	FFY-30	FFSP-30	FFY-33	FFSP-33	FFSP-36
FF-YFT	853333	Y Fan Transition	1	1	1	1		1		1		
FF-SFT	853341	Standard Fan Transition					2		2		2	2
FF-Y	853325	Flush Floor Y	1	1	1	1		1		1		
FF-10-F	853382	10' Form	2	2	2	2	4	4	4	4	4	4
FF-4-F	853390	4' Form			2	4			2	2	2	4
FF-2-F	853408	2' Form		2						2		
FF-18-CPS	853424	Corr.-Perf. Sheet 18 gauge	6	7	8	10	10	12	12	14	13	14
FF-18-CSS	853432	Corr. Solid Sheet 18 gauge					2		2		2	2
FF-SEP	853457	Solid End Plate	2	2	2	2	2	2	2	2	2	2



(SPECIFICATIONS SUBJECT TO CHANGE WITHOUT NOTICE)

CALDWELL FLUSH FLOOR VENTRATION PACKING LIST

Part No.	Description	CS-18	CY-18	CY-21	CY-24	CY-27	CSP-27	CY-30	GSP-30	CY-33	GSP-33	GSP-36
206-2-0123	Transition		1	1	1	1		1		1		
206-2-0124	Transition	1					2		2		2	2
206-2-0098	Y-Transition		1	1	1	1		1		1		
206-2-0097	Bolt Bag Assembly	*										
206-2-0109	Bolt Bag Assembly		*									
206-2-0099	Bolt Bag Assembly			*								
206-2-0100	Bolt Bag Assembly				*							
206-2-0101	Bolt Bag Assembly					*						
206-2-0102	Bolt Bag Assembly							*				
206-2-0103	Bolt Bag Assembly											*
206-2-0104	Bolt Bag Assembly											
206-2-0105	Bolt Bag Assembly											
206-2-0106	Bolt Bag Assembly								*			
206-2-0107	Bolt Bag Assembly						*					
206-3-0154	Form A 10'0"	1	2	2	12	2	4	4	4	4	4	4
206-3-0155	Form B 4'0"	1			2	4			2	2	2	4
206-3-0166	Form C 2'0"			2							2	4
206-3-0156	Perf. Floor Sheet	3	6	7	8	10	10	12	12	14	13	14
206-3-0157	Solid Floor Sheet	1							2		2	2
206-3-0163	End Plate	1	2	2	2	2	2	2	2	2	2	2
*Bulletin 818	Assembly & Installation Instruction	1	1	1	1	1	1	1	1	1	1	1
*Bulletin 819	Packing List	1	1	1	1	1	1	1	1	1	1	1
*900-15118	S.M.S. 12-14 x 3/4"	30	48	55	62	76	88	90	102	104	109	116
*902-00000	Bolt Bag 4 x 6	1	1	1	1	1	1	1	1	1	1	1

*Included in bolt bag assembly

NOTE: S.M.S. Distribution: 2 per standard transition, 4 per Y-transition, 7 per floor sheet (solid or perforated)



MANUFACTURING COMPANY

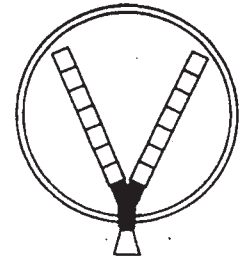
POST OFFICE BOX 338
KEARNEY, NEBRASKA, 68847

Phone
(308) 237-3188

A DIVISION OF CHIEF INDUSTRIES, INC.



Flush Floor Aeration Assembly and Installation Instructions

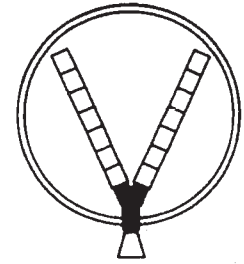


1. Refer to layout drawing (Figure 1) for information needed in laying systems out. Figure 1 shows layout information for all Caldwell Flush Floor Aeration Systems.
2. Start laying system out with the transition to be used.
3. For the FFSP refer to Figure 3 for information on how the transition and forms are put together.
4. On FFSP systems slide the transition into the form approximately 3".
5. Transition and forms lock together using one self drilling fastener screw on each side of the transition at the overlap.
6. Overlap forms approximately 2" laying them out in a straight line.
7. Place floor sheets on forms starting at the transition (if solid sheets are furnished with the system, lay them out first).
8. Slide the sheet tightly against transition to eliminate any gaps that may be present.
9. Lay out floor sheets overlapping one corrugation at each seam.
10. Always overlap so the last sheet laid down is on the top of the seam. The last sheet laid may require overlapping more than the corrugation to fit forms properly.
11. Lock floor sheets in place using self drilling fasteners. Refer to Figure 3 on layout drawing for self drilling fastener location.
12. On FFY systems refer to Figure 2 for information on how standard transition and Y transition are assembled.
13. On FFY system slide the standard transition over the Y transition approximately 3".
14. Lock transitions together using one self drilling fastener on each side of transition at the overlap.
15. The forms and sheets are assembled the same as in steps 6-11.
16. Refer to Figure 3 for needed information to connect forms to Y transition. Slide the transition approximately 1" into form. It will be necessary to field cut the corners of the forms a 45° angle to allow transition to slide into place.
17. Lock transition and form together using a self drilling fastener on each side of transition at the overlap.
18. After floor sheets and all other parts have been locked in place, block off the end of form furthest from transition.
19. Anchor system in place and run concrete.

(SPECIFICATIONS SUBJECT TO CHANGE WITHOUT NOTICE)

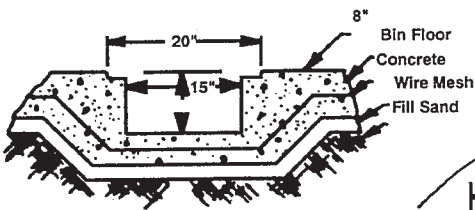


Flush Floor Aeration Layouts



LOCATION DIMENSIONS FOR FFSP SYSTEMS			
BIN DIA.	SYSTEM	DIM. A	DIM. B
27'-0"	FFSP-27	13'-8"	6'-9"
30'-0"	FFSP-30	15'-0"	7'-8"
33'-0"	FFSP-33	16'-8"	8'-3"
36'-0"	FFSP-36	18'-0"	9'-0"

LOCATION DIMENSIONS FOR FFY SYSTEMS			
BIN DIA.	SYSTEM	DIM. C	DIM. D
18'-0"	FFY-18	8'-4"	4'-2"
21'-0"	FFY-21	10'-2"	5'-1"
24'-0"	FFY-24	11'-10"	5'-11"
27'-0"	FFY-27	15'-2"	7'-7"
30'-0"	FFY-30	16'-10"	8'-5"
33'-0"	FFY-33	20'-2"	10'-1"



Earth
Cross Section of Aeration Form In Concrete

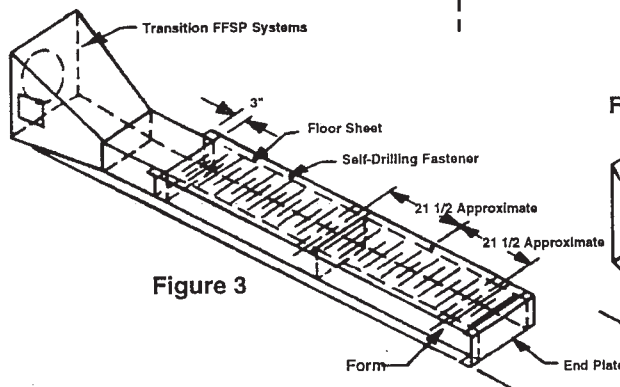
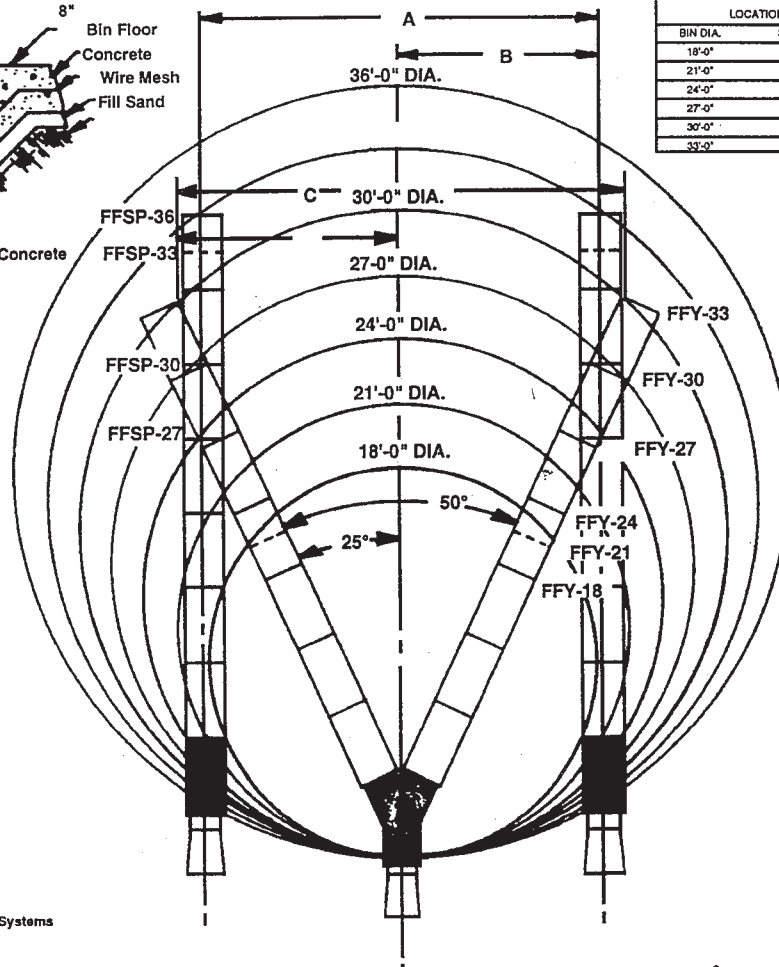


Figure 3

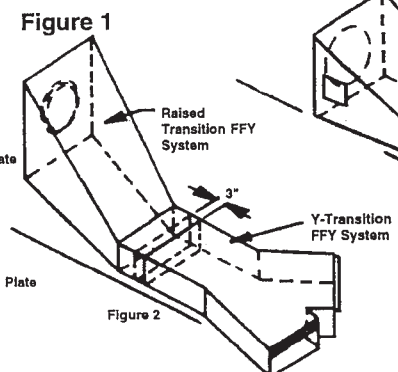


Figure 1

Figure 2

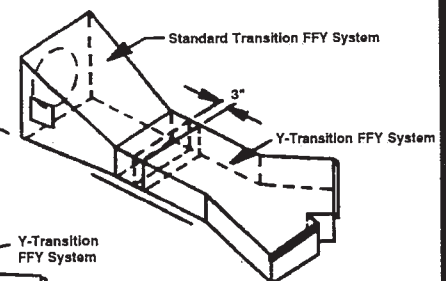


Figure 2

Refer to page 358 for Assembly and Installation Instructions.

(SPECIFICATIONS SUBJECT TO CHANGE WITHOUT NOTICE)