



COMMERCIAL CD DRYERS

- » Custom-designed to your unique needs
- » Efficient, reliable commodity drying throughout the world
- » Easy to install and maintain



*Continuous mixed flow
grain dryers for optimal
drying performance*

agri.chiefind.com

Trusted. Tested. True.®

THE CHIEF CD CONTINUOUS MIXED FLOW DRYER



Why the Chief CD Continuous Mixed Flow Dryer is used around the world!

With standard dryer capacities ranging from 355 to 11,340 bushels/hour, Chief CD Dryers are used for a wide variety of commodities including wheat, corn, rice, coffee, cocoa and more. The requirements of your dryer will be carefully assessed, assuring reliable operation regardless of most environmental conditions, including extreme climates.

Consistent uniform airflow

Chief CD Dryers assure even temperature and airflow for optimum drying results.

Built for years of continuous use

Chief CD Dryers are constructed of high quality galvanized steel, with its exterior covered in painted galvanized sheeting to add many years of dependable service. All components are engineered for maximum longevity.

Touchscreen operation

PLC is individually programmed for each specific installation to control both the dryer and auxiliary equipment on the grain facility, such as gates, conveyors and elevators.

Easy installation

Chief CD Dryers are shipped in preassembled modular units and feature completely bolted construction.

Reduced maintenance

The Chief CD Dryer requires minimal cleaning and maintenance resulting from its 'clean' design inside and out.

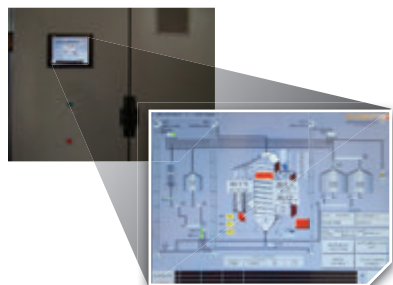
Environmentally considerate

Our team of dryer experts will carefully consider the environmental concerns of your specific locality, including the height, noise, dust, color and air quality.



CHIEF CD DRYER FEATURES

Control Panel



- Schneider touch screen HMI as standard
- 12" standard screen size
- Schneider visual control equipment
- Maximum visualization
- Multi-lingual
- Options:
 - » 15" premium screen
 - » SCADA System
 - » Remote monitoring (phone, tablet & PC)
 - » Control of complete grain facility
 - » Integrated Dryer Master 510

Installation



Installation is easy thanks to the Chief CD Dryer's pre-assembled modular components.

- All bolted construction
- CAD build drawings for each dryer
- Solidworks 3D illustrated installation instructions
- Worldwide multi-lingual installation engineers

1 Cladding



- Painted galvanized sheeting
- 40 year paint warranty
- Color to customer's preference
- Hot air column thermally insulated

Cladding color options:

COPPER CANYON	WHITE	BRIGHT WHITE	BRUSHED SLATE
SADDLE TAN	LIGHT STONE	COBBLE-STONE	CLAY MIST
SMOKE GRAY	CHARCOAL GRAY	COCOA BROWN	ROMAN BLUE
RED	CLASSIC BURGUNDY	FOREST GREEN	BLACK

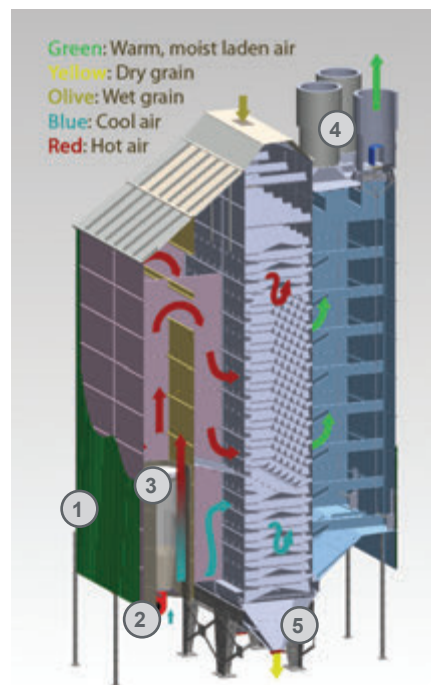
2 Burners



- Fully modulating gas burners including gas trains to provide the most efficient air/fuel mixture

3 Firing

- Direct within high-grade stainless steel combustion chambers



Dryer without Heat Recovery

4 Fans

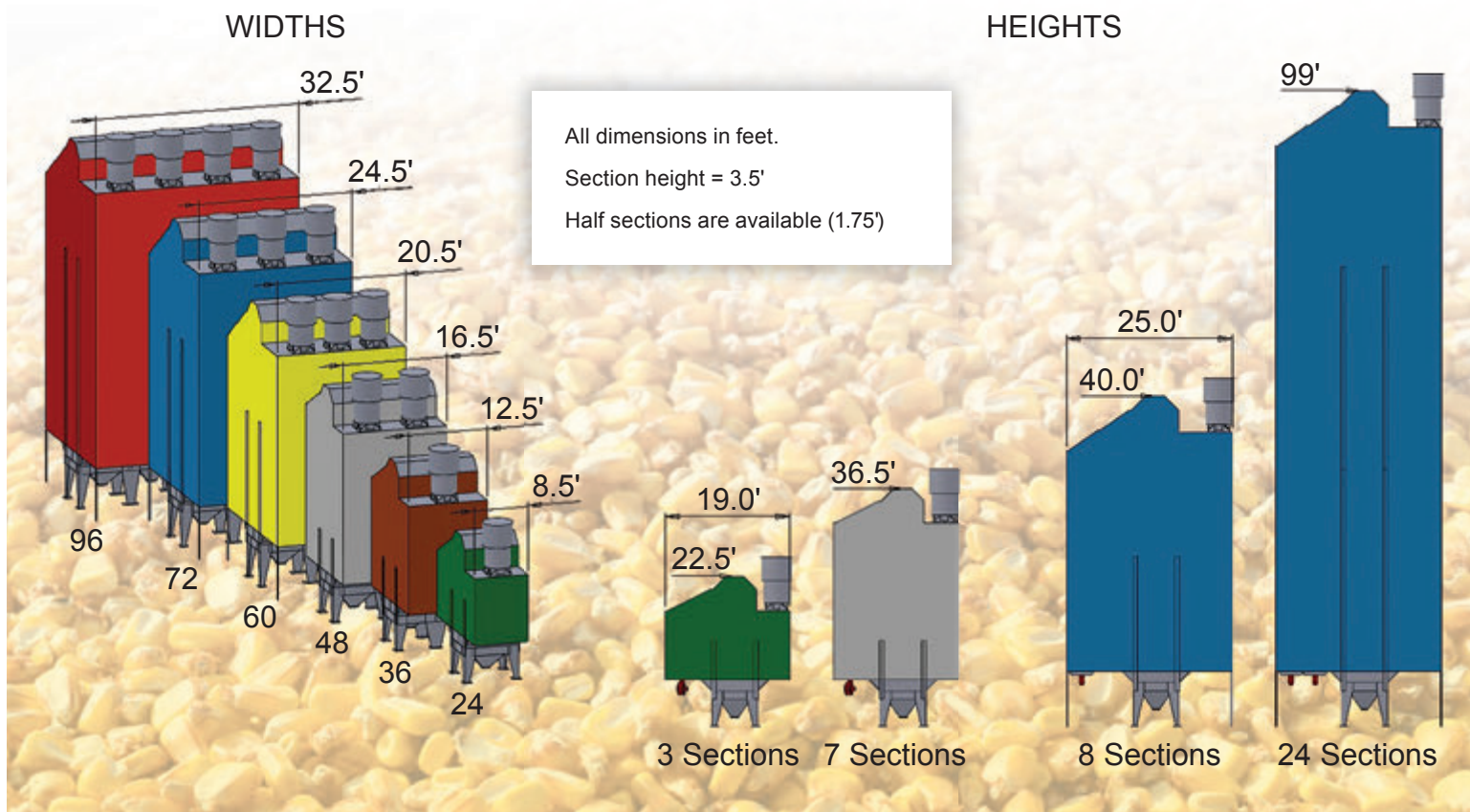


- Standard high-efficiency axial fans
- Vertical or horizontal
- Standard silencing to 80dBA @ 3.28'
- Additional silencing available
- Options:
 - » variable speed
 - » dust collection fans
 - » weather shutters

5 Discharge



- Full width pneumatic pulse action
- Including compressor as standard



**Dimensions are approximate. Some options, such as heat recovery, filters and reserve sections will change dimensions. Please contact Chief Agri for exact dimensions.*

CD DRYER CAPACITIES

(BASED ON DRYING CORN 20% - 15%)

Model	Number of Sections																					
	3	4	5	6	7	8	9	10	11	12	13	14	15	16	17	18	19	20	21	22	23	24
24	355	475	590	710	830	945	1065	1180	1300	1420	1535	1655										
	9.02	12.06	14.98	18.03	21.08	24.00	27.05	29.97	33.02	36.06	38.98	42.03										
36	535	715	885	1065	1245	1420	1600	1770	1950	2130	2305	2485	2665	2835								
	13.59	18.16	22.48	27.05	31.62	36.06	40.63	44.95	49.52	54.10	58.54	63.11	67.68	72.00								
48	710	950	1180	1420	1660	1890	2130	2360	2600	2840	3070	3310	3540	3780								
	18.03	24.13	29.97	36.06	42.16	48.00	54.10	59.94	66.03	72.13	77.97	84.06	89.90	96.00								
60		1190	1475	1775	2075	2365	2665	2950	3250	3550	3840	4140	4425	4725	5025	5315						
		30.22	37.46	45.08	52.70	60.06	67.68	74.92	82.54	90.16	97.52	105.1	112.4	120.0	127.6	135.0						
72			1770	2130	2490	2835	3195	3540	3900	4260	4605	4965	5310	5670	6020	6375	6735	7080	7440	7800		
			44.95	54.10	63.24	72.00	81.14	89.90	99.05	108.2	117.0	126.1	134.9	144.0	152.9	161.9	171.0	179.8	189.0	198.1		
96				2840	3320	3780	4260	4720	5200	5680	6140	6620	7080	7560	8040	8500	8980	9440	9920	10400	10860	11340
				72.13	84.32	96.00	108.2	119.9	132.1	144.3	155.9	168.1	179.8	192.0	204.2	215.9	228.1	239.7	251.9	264.1	275.8	288.0

Bushels/Hour

Metric Tons/Hour

Please contact us for specific dryer sizing
to fulfill your requirements.

**Drying capacities represent Chief's best estimate of attainable wet bushel capacities based on a combination of calculations and field testing. Capacities will vary based on many factors including, but not limited to: kernel characteristics (such as test weight, initial moisture content and temperature, maturity, and variety/hybrid), ambient weather conditions, cleanliness of grain, and dryer operation. Information listed is to be used as a performance guide only. Chief does not assume any implied or expressed warranty of listed capacities.

CHIEF

AGRI

P.O. Box 848 | Kearney, Nebraska 68848 USA
 Phone (308) 237-3186 | Toll Free (800) 359-7600
 Fax (308) 389-6703
agri.chiefind.com

08/17PC-11/3/18